



PARTS CATALOGUE

EGO'S (FUEL INJECTION)
2014

AL115FX (1VB1) MALAYSIA



1N1VB-440E1

()

AL115FX
PARTS CATALOGUE
©2013 by Yamaha Motor Co., Ltd.
1st edition, October 2013
All rights reserved.
Any reprinting or unauthorized use
without the written permission of
Yamaha Motor Co., Ltd.
is expressly prohibited.
Printed in Japan.

FOREWORD

This Parts Catalogue is related to the parts for the model(s) on the cover page. When you are ordering replacement parts, please refer to this Parts Catalogue and quote both part numbers and part names correctly.

1. Modifications or additions which have been made after the issue of the Parts Catalogue will be announced in the Parts News.

It is advisable that you make the necessary corrections to the Parts Catalogue according to the Parts News.

2. Abbreviations

The following abbreviations are used in this Parts Catalogue.

“UR” Use specified parts number.

“UN” Use as many as needed.

“AP” Alternate Parts

“LM” Locally Made (Parts need to be ordered locally)

“F#” Frame No. (Applicable machine No.)

“O/S” Over Size

3. The number of components for assembly

- Parts, which are to be supplied in an assembly, are listed with a dot (.) in front of the part name as shown below.
- The numeral appearing to the right of each component part indicates the quantity of parts for each assembly unit.

PART NO.	DESCRIPTION	Q'TY	REMARKS
2F5-83310-60	FRONT FLASHER LIGHT ASSY	2	
115-83311-60	.BULB (6V-18W)	1	

4. Applicable colours of graphics are represented in the “REMARKS” as shown below.

PART NO.	DESCRIPTION	Q'TY	REMARKS
2N4-24110-00-X5	FUEL TANK COMP.	2	MXR
3J1-24240-10	.GRAPHIC, FUEL TANK	1	FOR MXR

5. Note that the illustrations for reference in finding parts numbers are not to be used for assembling. When assembling, please use the applicable service manual.

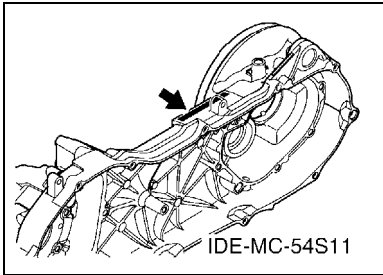
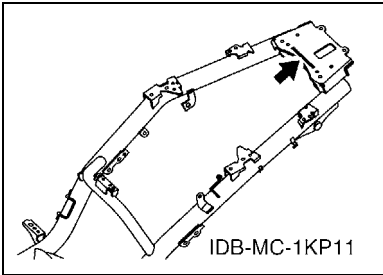
6. The asterisk (*) before a reference number indicates modified items after the first edition.

FOREWORD

7. Applicable Serial No.

Frame Serial No.

Engine Serial No.



8. Applicable Colour Code (The (*) mark shows Model colour.)

Abbreviation	Colour Name	Colour Code
BIB2	BLUISH BLACK 2	007B
BMC(*)	BLUE METALLIC C	0775
BWC1(*)	BLUISH WHITE COCKTAIL 1	0390
DBNM8	DARK BLUISH GRAY METALLIC 8	0919
RM7(*)	RED METALLIC 7	1218
SMX(*)	BLACK METALLIC X	0903
YB	YAMAHA BLACK	0033

9. Applicable Starting Serial No.

Frame Serial No.

Serial No.	Name Of Q'ty Column	Model Code

Engine Serial No.

Serial No.	Name Of Q'ty Column	Model Code

CONTENTS

ENGINE

CYLINDER	1
CRANKSHAFT & PISTON	2
VALVE	4
CAMSHAFT & CHAIN	5
OIL PUMP	6
AIR SHROUD & FAN	7
INTAKE	8
EXHAUST	10
CRANKCASE	11
CRANKCASE COVER 1	13
STARTER	14
CLUTCH	15
TRANSMISSION	17

CHASSIS

FRAME	18
FENDER	19
SIDE COVER	20
REAR ARM & SUSPENSION	23
STEERING	24
FUEL TANK	26
SEAT	27
FRONT WHEEL	28
FRONT BRAKE CALIPER	29
REAR WHEEL	30
STEERING HANDLE & CABLE	31
FRONT MASTER CYLINDER	33
STAND & FOOTREST	34
LEG SHIELD	36
GENERATOR	38
STARTING MOTOR	39
FLASHER LIGHT	40
METER	41
HEADLIGHT	42
TAILLIGHT	43
HANDLE SWITCH & LEVER	44
ELECTRICAL 1	45
ELECTRICAL 2	46

INDEX

NUMERICAL INDEX	47
-----------------------	----

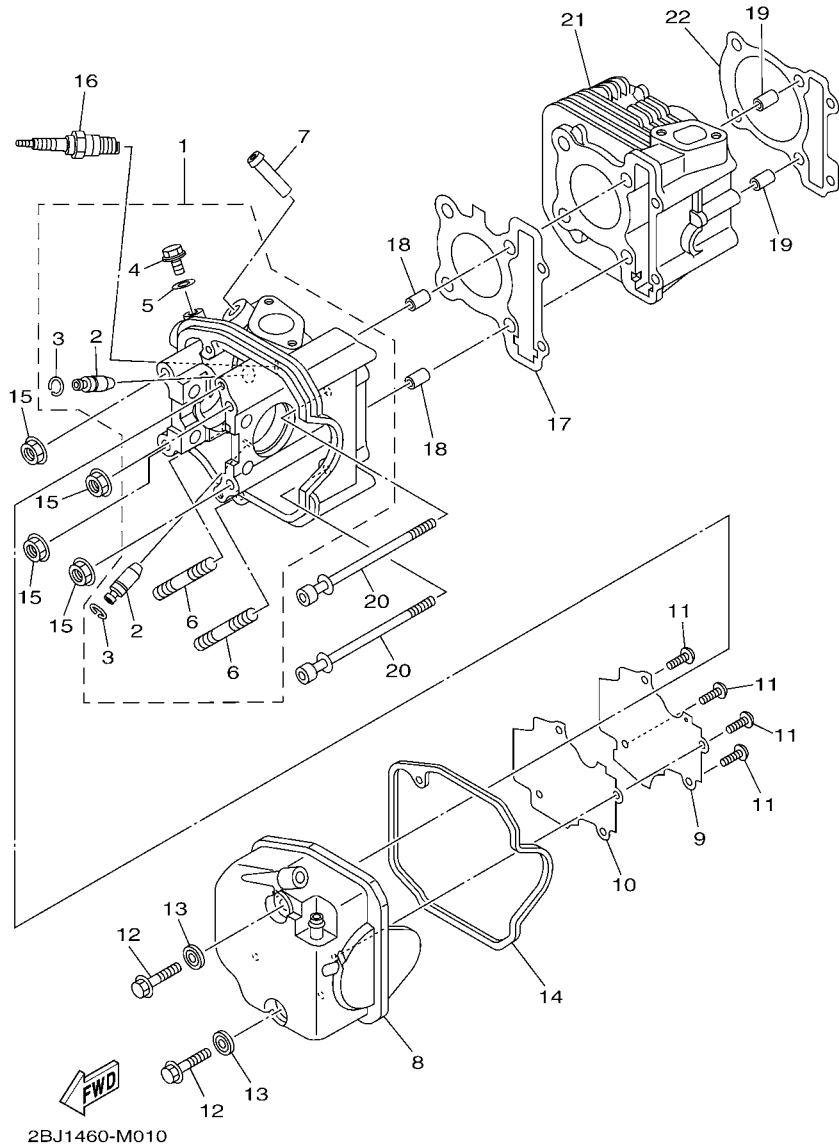
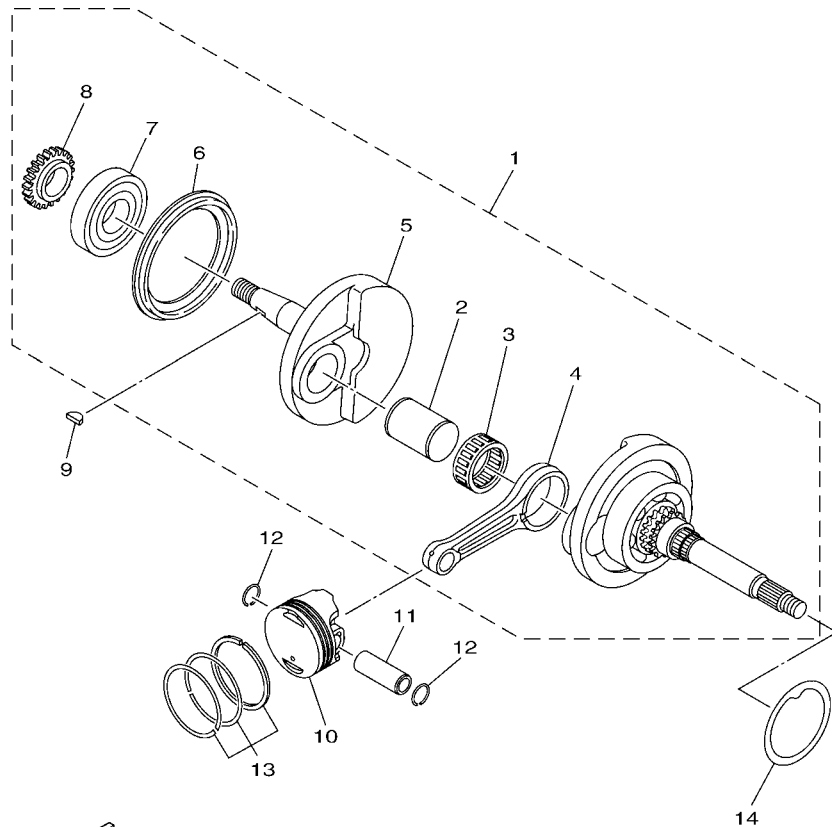


FIG. 1 CYLINDER

REF. NO.	PART NO.	DESCRIPTION	TVBT				REMARKS
1	54P-E1102-00	CYLINDER HEAD ASSY	1				
2	54P-E1133-10	.GUIDE, VALVE 1	2				
3	93440-10085	.CIRCLIP	2				
4	95022-06010	.BOLT, FLANGE	1				
5	90430-06014	.GASKET	1				
6	95612-08618	.BOLT, STUD	2				
7	54P-E111J-00	PIPE 1	1				
8	54P-E1191-00	COVER, CYLINDER HEAD 1	1				
9	54P-E1165-00	PLATE, BREATHER	1				
10	54P-E1169-00	GASKET, BREATHER COVER	1				
11	90149-05801	SCREW	4				
12	95812-06030	BOLT, FLANGE	2				
13	1LB-E1173-00	WASHER, SEALING	2				UR
	54P-E1173-00	WASHER, SEALING	2				UR
14	54P-E1193-00	GASKET, HEAD COVER 1	1				
15	90179-08518	NUT	4				
16	94700-00880	PLUG, SPARK (NGK CR6HSA)	1				UR
	94700-00895	PLUG, SPARK (ND U20FSR-U)	1				UR
17	54P-E1181-00	GASKET, CYLINDER HEAD 1	1				
18	91810-14809	PIN, DOWEL	2				
19	91810-14809	PIN, DOWEL	2				
20	90110-06868	BOLT, HEXAGON SOCKET HEAD	2				
21	54P-E1311-00	CYLINDER 1	1				UR
	54P-E1311-10	CYLINDER 1	1				UR
22	54P-E1351-00	GASKET, CYLINDER	1				



54P1460-L021

FIG. 2 CRANKSHAFT & PISTON

REF. NO.	PART NO.	DESCRIPTION	TVBI				REMARKS
1	54P-E1400-00	CRANKSHAFT ASSY	1				UR
	54P-E1400-10	CRANKSHAFT ASSY	1				UR
	54P-E1400-20	CRANKSHAFT ASSY	1				UR
	54P-E1400-30	CRANKSHAFT ASSY	1				UR
	54P-E1400-40	CRANKSHAFT ASSY	1				UR
	54P-E1400-50	CRANKSHAFT ASSY	1				UR
	1KP-E1400-00	CRANKSHAFT ASSY	1				UR
	1KP-E1400-10	CRANKSHAFT ASSY	1				UR
	1KP-E1400-20	CRANKSHAFT ASSY	1				UR
	1KP-E1400-30	CRANKSHAFT ASSY	1				UR
2	5MX-E1681-10	.PIN, CRANK 1	1				
3	93310-528Y8	.BEARING	1				
4	5D9-E1651-00	.ROD, CONNECTING	1				
5	54P-E1422-00	.CRANK 2	1				UR
	54P-E1422-10	.CRANK 2	1				UR
	1KP-E1422-00	.CRANK 2	1				UR
6	5LW-E3452-00	.COVER, ROTOR FILTER	1				
7	93306-372X2	.BEARING	1				UR
	93306-372Y5	.BEARING	1				UR
8	5TL-E3324-00	.GEAR, PUMP DRIVE	1				
9	90280-03017	KEY, WOODRUFF	1				
10	54P-E1631-00	PISTON (STD)	1				UR
	1KP-E1631-00	PISTON (STD)	1				UR
11	54P-E1633-10	PIN, PISTON	1				
12	93450-14088	CIRCLIP	2				
13	54P-E1603-00	PISTON RING SET (STD)	1				
14	54P-E1445-00	SPACER	1				UR

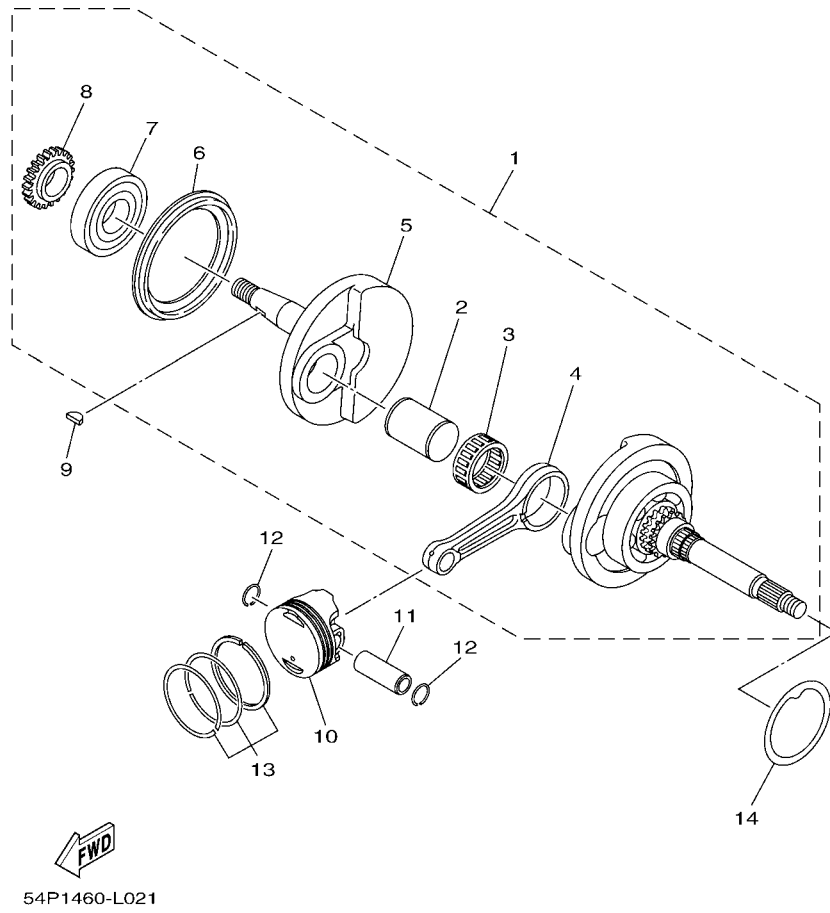


FIG. 2 CRANKSHAFT & PISTON

REF. NO.	PART NO.	DESCRIPTION	TVBI			REMARKS
14	54P-E1445-10	SPACER	1			UR

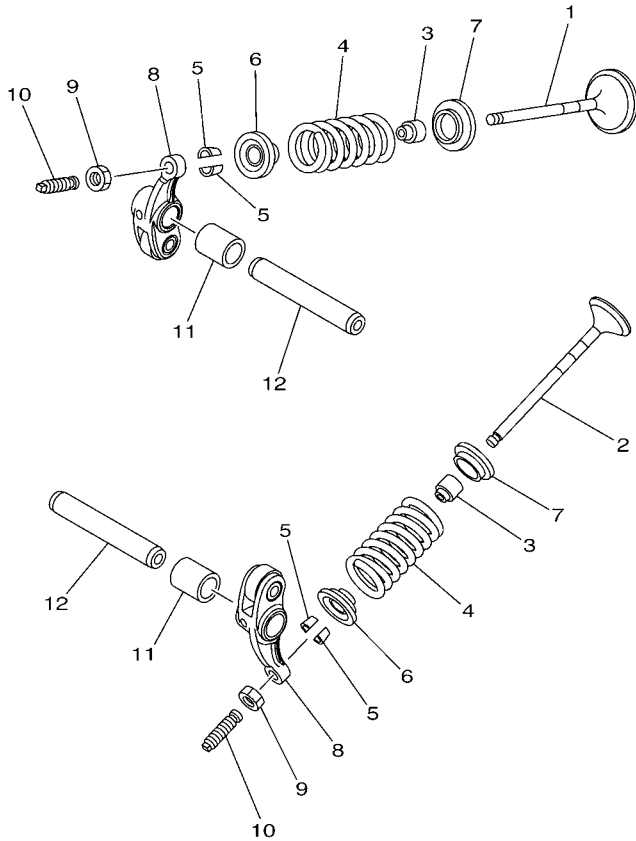
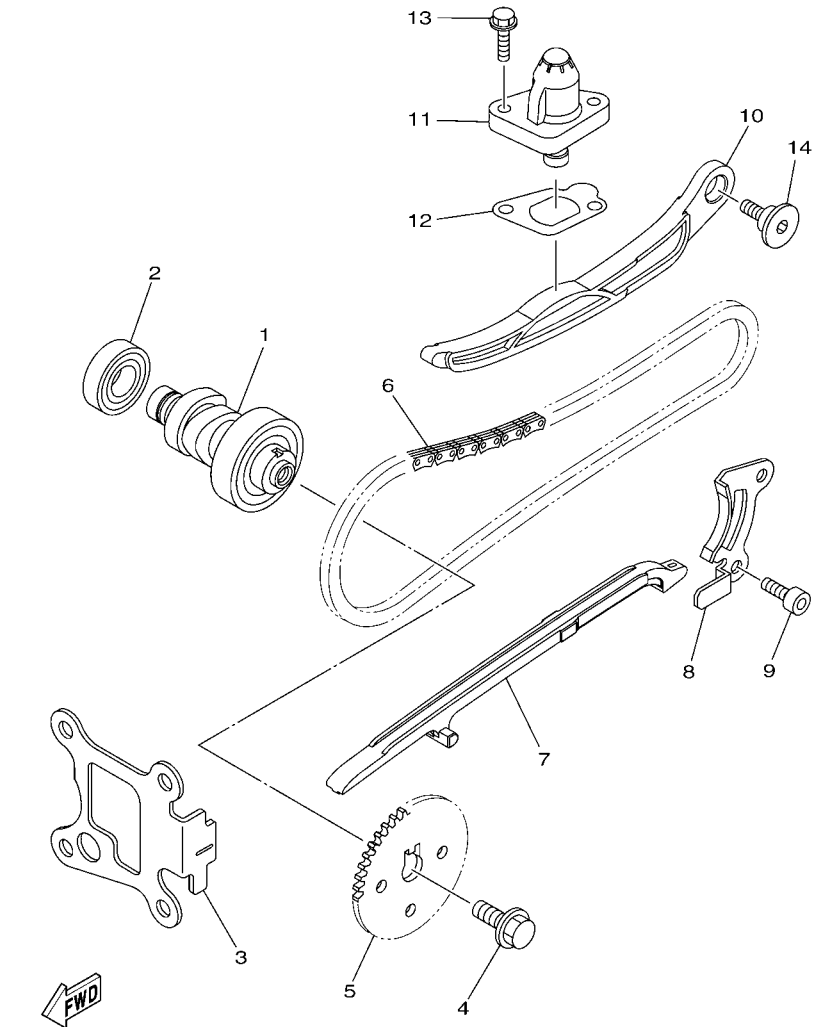


FIG. 3 VALVE

REF. NO.	PART NO.	DESCRIPTION	TVBT				REMARKS
1	54P-E2111-00	VALVE, INTAKE	1				
2	54P-E2121-00	VALVE, EXHAUST	1				
3	54P-E2119-00	SEAL, VALVE STEM	2				
4	54P-E2113-00	SPRING, VALVE INNER	2				
5	5TL-E2118-00	LOCK, VALVE SPRING RETAINER	4				
6	54P-E2117-00	RETAINER, VALVE SPRING	2				UR
	1KP-E2117-00	RETAINER, VALVE SPRING	2				UR
7	5P0-E2126-00	SEAT, VALVE SPRING 2	2				UR
	1DY-E2126-00	SEAT, VALVE SPRING 2	2				UR
8	54P-E2151-00	ARM, VALVE ROCKER	2				UR
	54P-E2151-10	ARM, VALVE ROCKER	2				UR
9	90170-05803	NUT	2				
10	33S-E2159-00	SCREW, VALVE ADJUSTING	2				
11	44D-E2662-00	COLLAR 1	2				
12	54P-E2146-00	SHAFT, ROCKER	2				



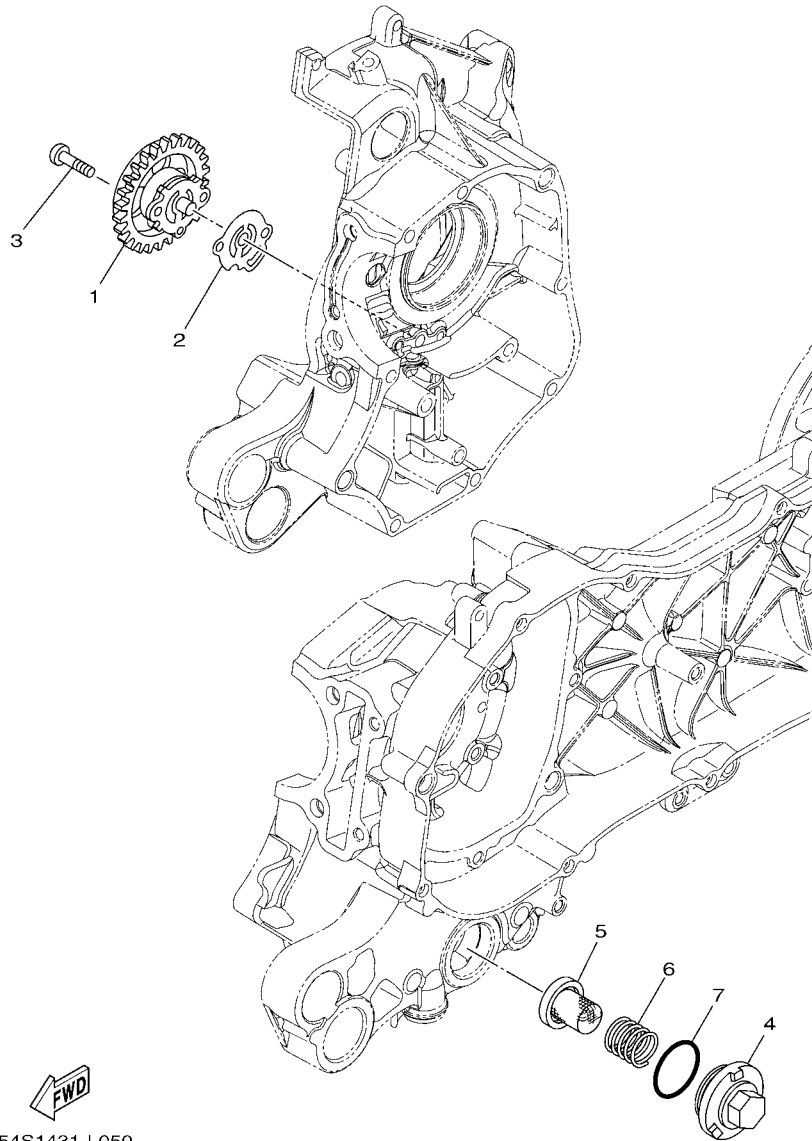
54S1431-L030



54P1460-L040

FIG. 4 CAMSHAFT & CHAIN

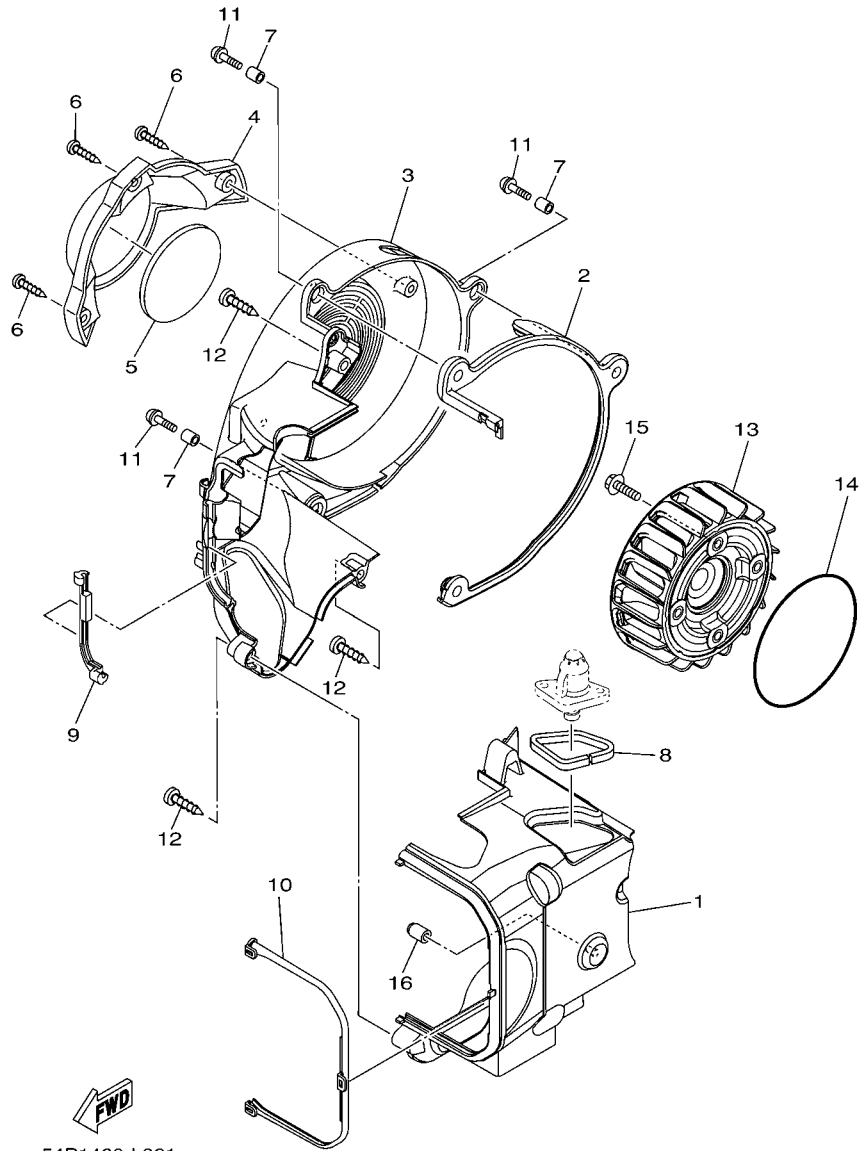
REF. NO.	PART NO.	DESCRIPTION	TVBT				REMARKS
1	54P-E2170-00	CAMSHAFT ASSY 1	1				
2	93306-002YW	BEARING	1				UR
	93306-002YS	BEARING	1				UR
3	54P-E111F-00	PLATE	1				
4	90105-088E1	BOLT, FLANGE	1				
5	44D-E2176-00	SPROCKET, CAM CHAIN	1				
6	94568-F9090	CHAIN	1				
7	54P-E2231-00	GUIDE, STOPPER 1	1				
8	44D-E2233-00	PLATE, GUIDE STOPPER 1	1				
9	91312-06012	BOLT	2				
10	54P-E2241-00	GUIDE, STOPPER 2	1				
11	5MX-E2210-10	TENSIONER ASSY, CAM CHAIN	1				
12	54P-E2213-00	GASKET, TENSIONER CASE	1				
13	95022-06020	BOLT, FLANGE	2				
14	54P-E2228-00	BOLT	1				



54S1431-L050

FIG. 5 OIL PUMP

REF. NO.	PART NO.	DESCRIPTION	TVBT				REMARKS
1	28D-E3300-10	OIL PUMP ASSY	1				UR
	1KP-E3300-00	OIL PUMP ASSY	1				UR
	1GC-E3300-00	OIL PUMP ASSY	1				UR
2	5LW-E3475-00	GASKET	1				
3	98502-05020	SCREW, PAN HEAD	2				
4	54P-E5351-00	PLUG, DRAIN	1				
5	54P-E3411-00	STRAINER, OIL	1				
6	90501-16004	SPRING, COMPRESSION	1				
7	93210-29800	O-RING	1				



54P1460-L061

FIG. 6 AIR SHROUD & FAN

REF. NO.	PART NO.	DESCRIPTION	TVBT				REMARKS
1	54P-E2651-00	AIR SHROUD, CYLINDER 1	1				
2	54P-E2658-00	DAMPER, AIR SHROUD 1	1				
3	54P-E2652-00	AIR SHROUD, CYLINDER 2	1				
4	54P-E262H-00	GUIDE 1	1				
5	54P-E2684-00	DAMPER, DUCT 1	1				
6	97707-50020	SCREW, TAPPING	3				
7	90387-067V1	COLLAR	3				
8	90520-05810	DAMPER, PLATE	1				
9	54P-E2659-00	DAMPER, AIR SHROUD 2	1				
10	54P-E2668-00	DAMPER, AIR SHROUD 3	1				
11	97602-06220	SCREW, PAN HEAD W/WASHER	3				
12	97702-60530	SCREW, TAPPING	3				
13	54P-E2611-00	FAN	1				
14	93210-94800	O-RING	1				
15	95822-06016	BOLT, FLANGE	4				
16	5LW-E3569-00	PLUG, BLIND	1				

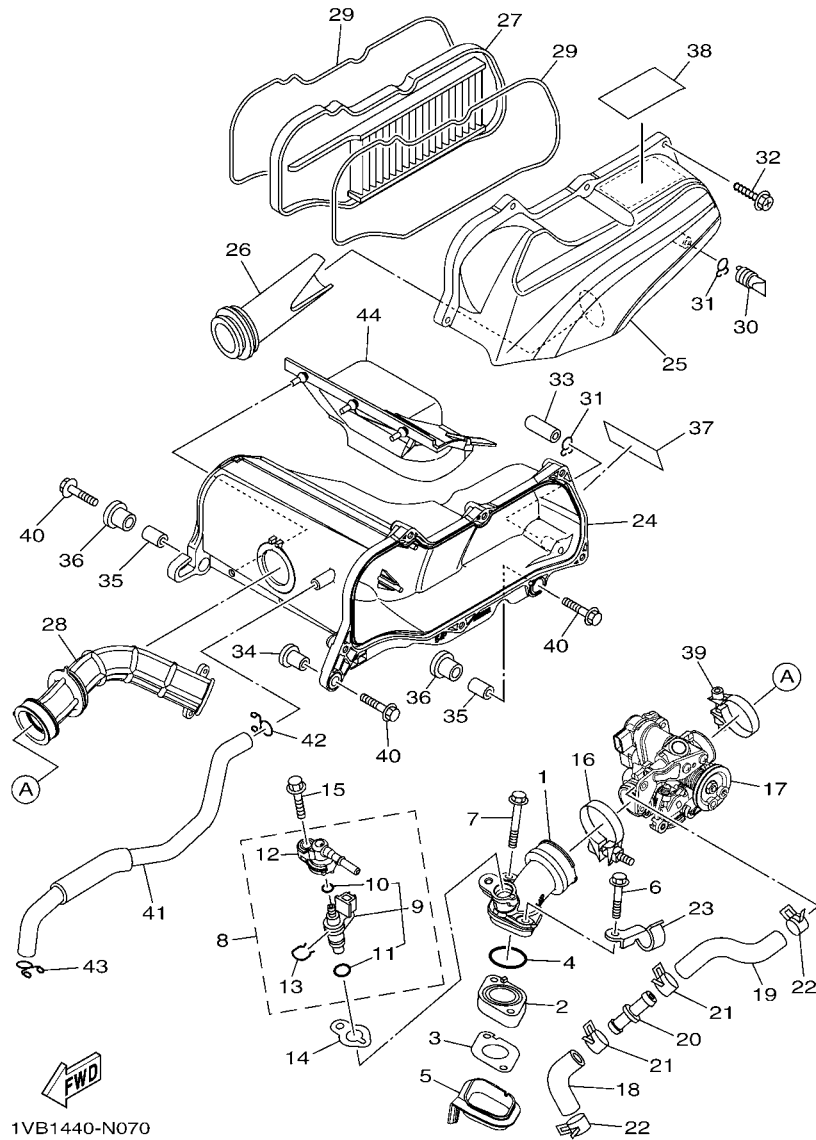
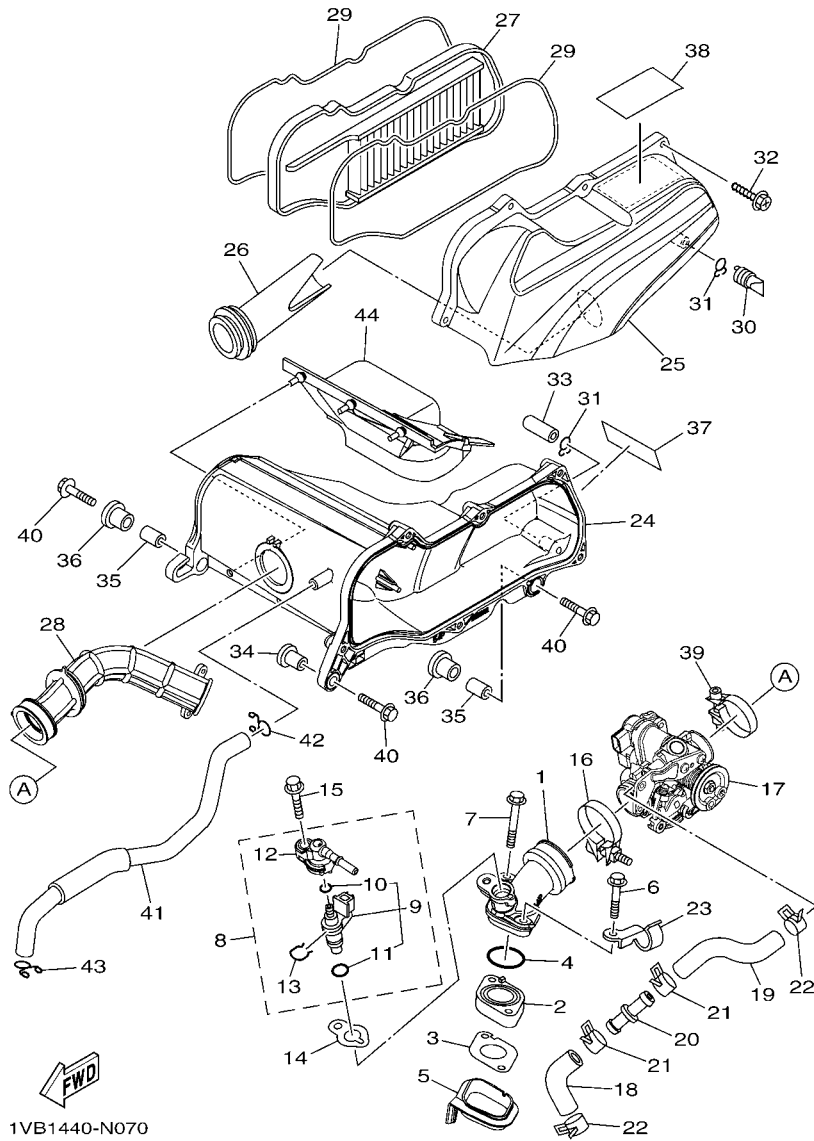


FIG. 7 INTAKE

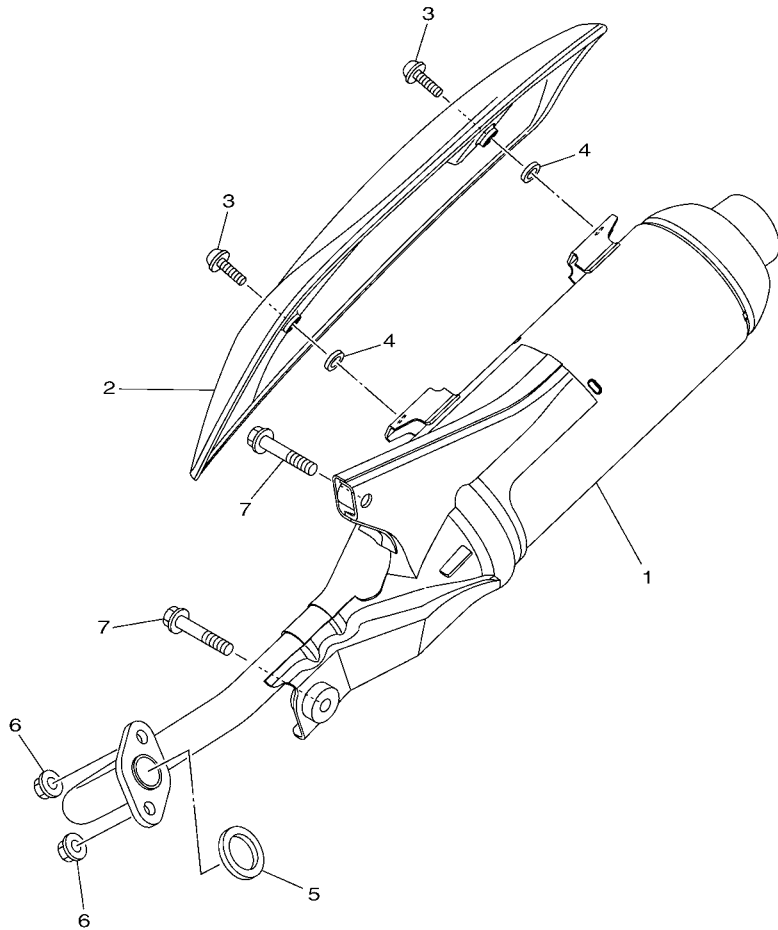
REF. NO.	PART NO.	DESCRIPTION	TVBI				REMARKS
1	1VB-E3585-00	MANIFOLD	1				
2	54P-E3595-00	JOINT	1				
3	54P-E3556-10	GASKET, MANIFOLD	1				
4	93210-30611	O-RING	1				
5	54P-E3593-00	DAMPER	1				
6	95812-06035	BOLT, FLANGE	1				
7	95812-06050	BOLT, FLANGE	1				
8	54P-E3770-10	INJECTOR ASSY	1				
9	54P-E3761-10	.INJECTOR	1				
10	54P-E4147-00	..O-RING	1				
11	5CA-E4147-00	..O-RING	1				
12	54P-E3938-00	.PIPE	1				
13	54P-E4137-00	.CLIP	1				
14	54P-E3557-00	GASKET	1				
15	95812-06025	BOLT, FLANGE	1				
16	54P-E3474-00	BAND	1				
17	54P-E3750-10	THROTTLE BODY ASSY	1				
18	54P-E3892-00	HOSE, AIR 2	1				
19	54P-E3895-00	HOSE, AIR	1				
20	54P-E3815-00	JOINT 1	1				
21	90467-15804	CLIP	2				
22	90467-15804	CLIP	2				
23	54P-E4146-00	PLATE	1				
24	54S-E4411-00	CASE, AIR CLEANER 1	1				
25	54S-E4412-00	CAP, CLEANER CASE 1	1				
26	54S-E4437-00	DUCT	1				
27	54S-E4450-00	ELEMENT ASSY, AIR CLEANER	1				



1VB1440-N070

FIG. 7 INTAKE

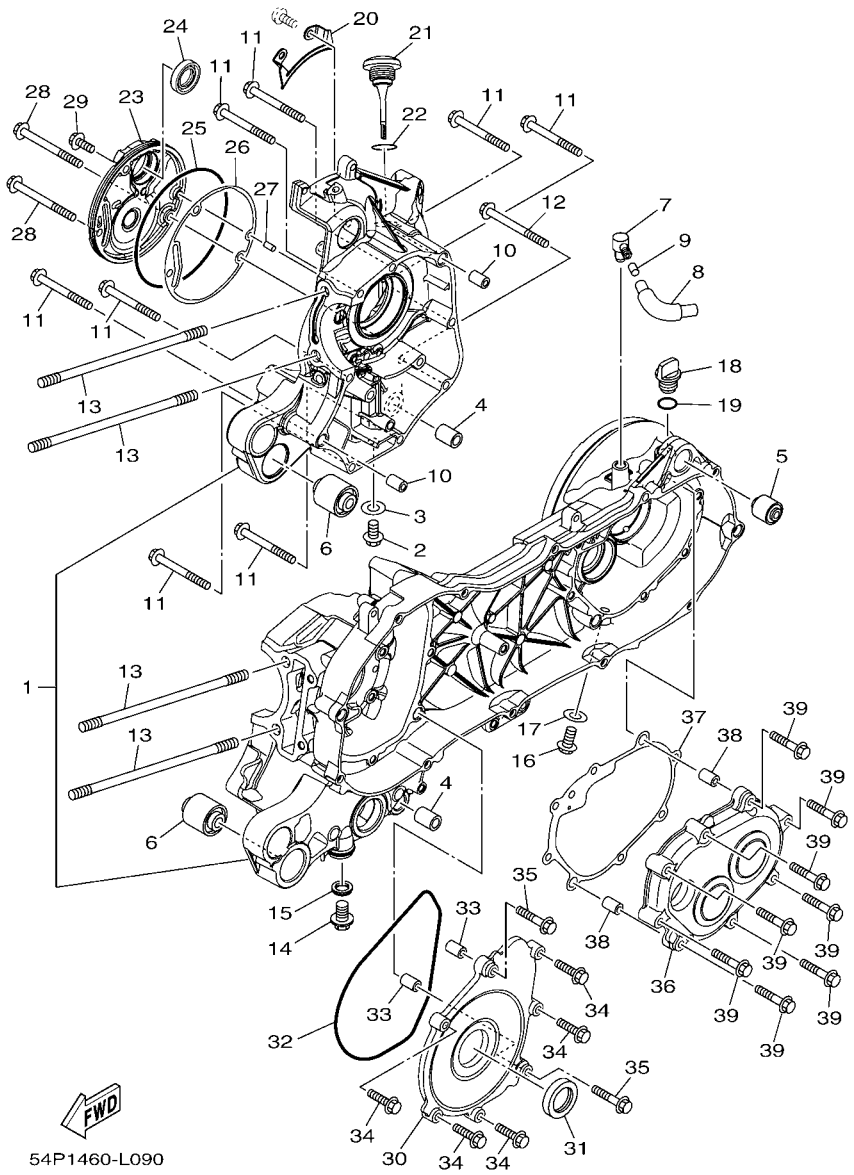
REF. NO.	PART NO.	DESCRIPTION	1VB1				REMARKS
28	54S-E4453-00	JOINT, AIR CLEANER 1	1				
29	54S-E4452-00	SEAL	2				
30	5TN-E443G-00	PIPE, DRAIN 2	1				
31	90467-12807	CLIP	2				
32	90163-05803	SCREW, TAPPING	6				
33	5VV-E443E-00	PIPE, DRAIN	1				
34	90387-06891	COLLAR	1				
35	90387-064W3	COLLAR	2				
36	90480-13013	GROMMET	2				
37	5P2-E417E-00	LABEL, CAUTION	1				
38	3XL-F178A-00	LABEL	1				
39	54P-E3575-00	BAND	1				
40	95812-06025	BOLT, FLANGE	3				
41	54P-E1166-00	PIPE, BREATHER 1	1				
42	90467-13858	CLIP	1				
43	90467-13858	CLIP	1				
44	54S-E442F-00	PROTECTOR	1				



54P1460-L080

FIG. 8 EXHAUST

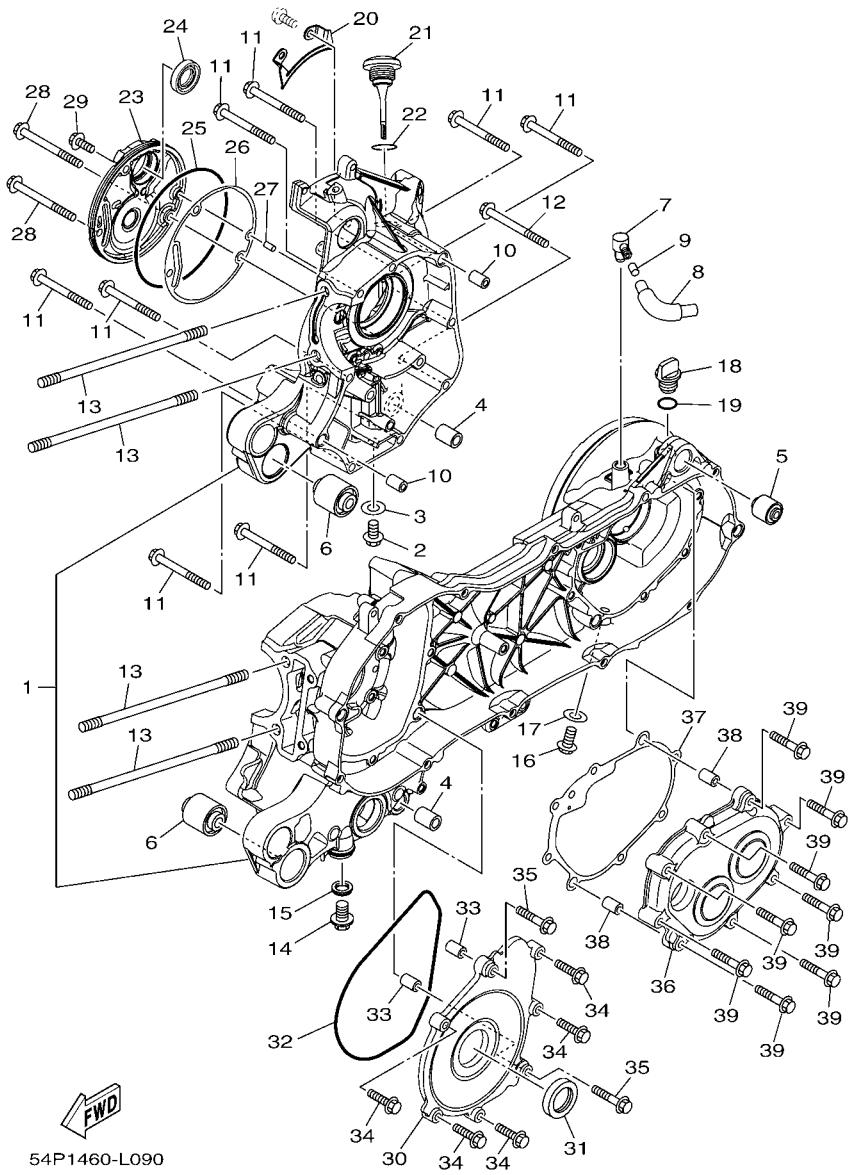
REF. NO.	PART NO.	DESCRIPTION	TVBT				REMARKS
1	1VB-E4610-00	EXHAUST PIPE ASSY 1	1				
2	1VB-E4718-00	PROTECTOR, MUFFLER 1	1				
3	90111-06811	BOLT,HEX. SOCKET BUTTON	2				
4	90201-05817	WASHER, PLATE	2				
5	10C-E4613-00	GASKET, EXHAUST PIPE	1				
6	95702-08500	NUT, FLANGE	2				
7	95812-08045	BOLT, FLANGE	2				
<hr/>							
<hr/>							
<hr/>							
<hr/>							
<hr/>							
<hr/>							
<hr/>							
<hr/>							
<hr/>							
<hr/>							
<hr/>							



54P1460-L090

FIG. 9 CRANKCASE

REF. NO.	PART NO.	DESCRIPTION	TVBT			REMARKS
1	54P-E5150-00	CRANKCASE ASSY	1			UR
	54P-E5150-10	CRANKCASE ASSY	1			UR
2	95022-08012	BOLT, FLANGE	1			
3	90430-08119	GASKET	1			
4	54P-F7121-00	BUSH	2			
5	5MX-F2216-00	BUSH, REAR SHOCK ABSORBER	1			
6	90388-10805	DAMPER	2			
7	54P-E5371-00	BREATHER	1			
8	54P-E5373-00	PIPE, BREATHER	1			
9	14D-E5408-00	ELEMENT 2	1			
10	91810-14809	PIN, DOWEL	2			
11	95022-06060	BOLT, FLANGE	8			
12	95022-06070	BOLT, FLANGE	1			
13	90116-08843	BOLT, STUD	4			
14	90340-12808	PLUG, STRAIGHT SCREW	1			
15	4YS-E1198-00	GASKET	1			
16	95812-08016	BOLT, FLANGE	1			
17	90430-08119	GASKET	1			
18	5LW-E5363-00	PLUG, OIL	1			
19	93210-148H8	O-RING	1			
20	54P-E5113-00	PLATE	1			
21	54P-E5362-00	PLUG, OIL LEVEL	1			
22	5LW-E3769-00	O-RING	1			
23	54P-E5417-00	COVER, CAP	1			
24	93102-19814	OIL SEAL	1			UR
	93102-19817	OIL SEAL	1			UR
25	93211-07800	O-RING	1			



54P1460-L090

FIG. 9 CRANKCASE

REF. NO.	PART NO.	DESCRIPTION	TVBT				REMARKS
26	54P-E5453-00	GASKET	1				
27	99480-05010	PIN	1				
28	95022-06070	BOLT, FLANGE	2				
29	95022-06016	BOLT, FLANGE	1				
30	54P-E5423-00	COVER 2	1				
31	93102-25816	OIL SEAL	1				UR
	93102-25819	OIL SEAL	1				UR
32	93211-37803	O-RING	1				
33	91810-14809	PIN, DOWEL	2				
34	95022-06025	BOLT, FLANGE	5				
35	95022-06035	BOLT, FLANGE	2				
36	54P-E5421-00	COVER, CRANKCASE 2	1				
37	54P-E5461-00	GASKET, CRANKCASE COVER 2	1				
38	91810-14809	PIN, DOWEL	2				
39	95022-06035	BOLT, FLANGE	8				

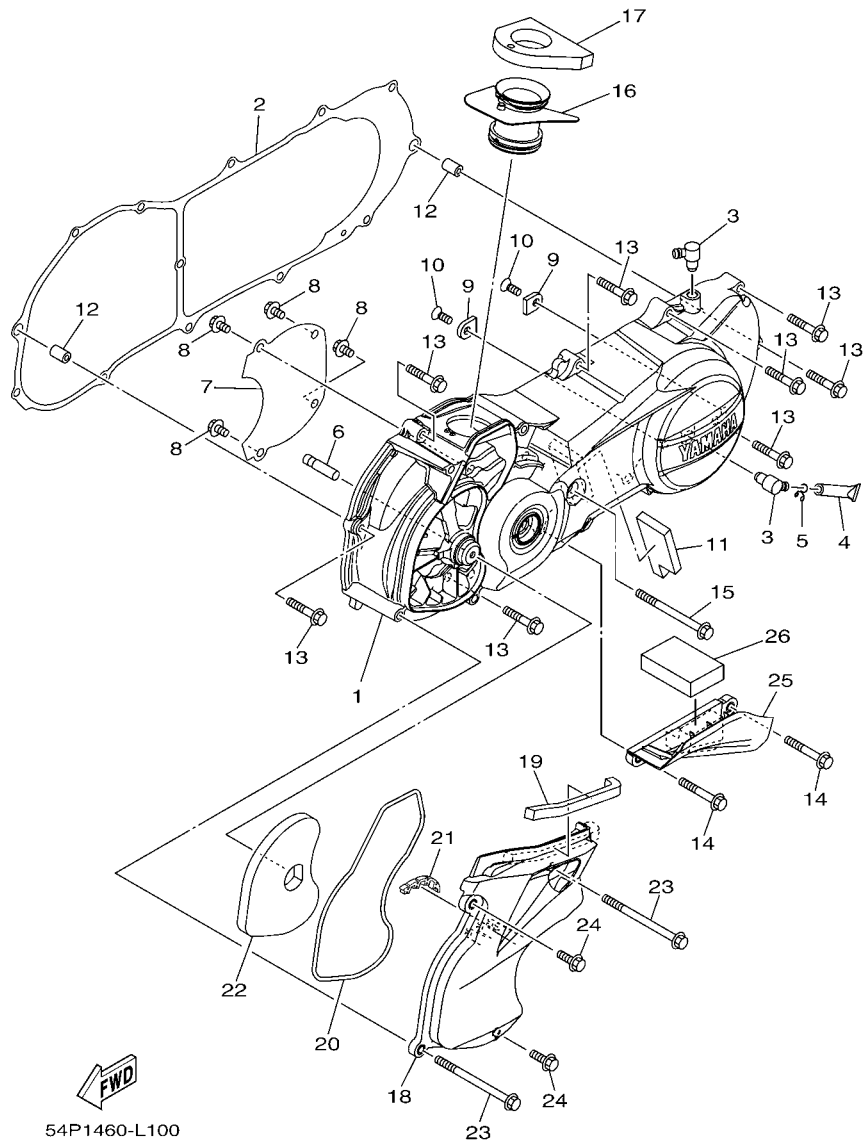
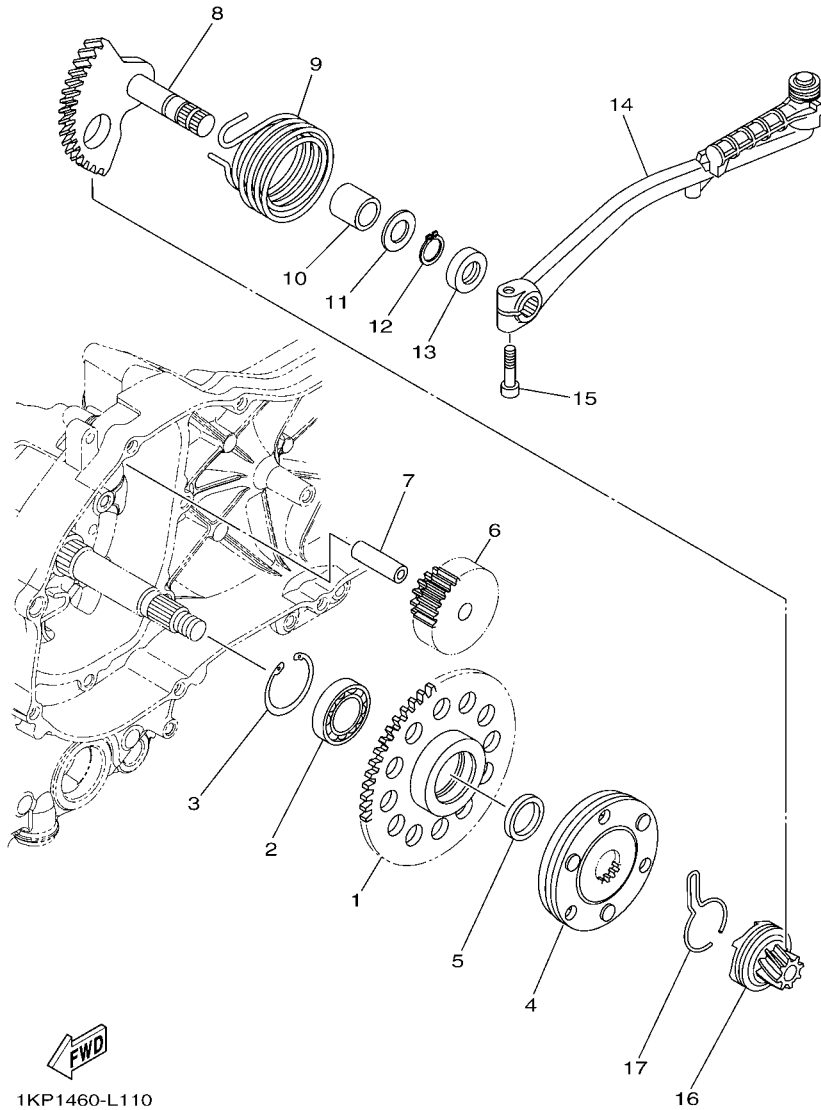


FIG. 10 CRANKCASE COVER 1

REF. NO.	PART NO.	DESCRIPTION	TVBI				REMARKS
1	54P-E5411-00	COVER, CRANKCASE 1	1				
2	54P-E5451-00	GASKET, CRANKCASE COVER 1	1				
3	54P-E5371-00	BREATHER	2				
4	4ST-E443E-00	PIPE, DRAIN	1				
5	90467-110A3	CLIP	1				
6	5LW-15659-01	SHAFT	1				
7	54P-E5191-00	PLATE	1				
8	95022-06010	BOLT, FLANGE	4				
9	54P-E5383-00	PLATE, BEARING COVER	2				
10	90151-06811	SCREW, COUNTERSUNK	2				
11	54P-E5316-00	DAMPER 1	1				
12	91810-14809	PIN, DOWEL	2				
13	95022-06035	BOLT, FLANGE	8				
14	95022-06045	BOLT, FLANGE	2				
15	95022-06080	BOLT, FLANGE	1				
16	54P-E5473-00	DUCT, AIR	1				
17	54P-E5408-00	ELEMENT 2	1				
18	54P-E5471-00	DUCT, AIR	1				
19	90520-10811	DAMPER, PLATE	1				
20	54P-E5472-00	SEAL, AIR DUCT	1				
21	54P-E5495-00	SEAL, PROTECTOR 1	1				
22	54P-E5407-00	ELEMENT 1	1				
23	95822-06090	BOLT, FLANGE	2				
24	95822-06020	BOLT, FLANGE	2				
25	54P-E5413-00	COVER	1				
26	90520-15806	DAMPER, PLATE	1				



1KP1460-L110

FIG. 11 STARTER

REF. NO.	PART NO.	DESCRIPTION	TVBT				REMARKS
1	54P-E5524-01	WHEEL, STARTER	1				
2	93306-804Y3	BEARING	1				UR
	93306-804Y6	BEARING	1				UR
	93306-804Y4	BEARING	1				UR
3	93450-32837	CIRCLIP	1				
4	54P-E5570-00	STARTER CLUTCH ASSY	1				UR
	1KP-E5570-00	STARTER CLUTCH ASSY	1				UR
	18S-E5570-00	STARTER CLUTCH ASSY	1				UR
5	44D-E5598-00	COLLAR	1				UR
	1GC-E5598-00	COLLAR	1				UR
6	54P-E5512-00	GEAR, IDLER 1	1				
7	44D-E5521-00	SHAFT 1	1				
8	5TL-E5601-10	KICK SHAFT ASSY	1				
9	90508-32768	SPRING, TORSION	1				
10	90380-15811	BUSH, SOLID	1				
11	90201-154E8	WASHER, PLATE (T=1.0)	1				
12	99009-15400	CIRCLIP	1				
13	93102-15801	OIL SEAL	1				
14	1KP-E5620-00	KICK CRANK ASSY	1				
15	91312-06025	BOLT	1				
16	4VP-E5630-00	KICK PINION ASSY	1				UR
	54P-E5630-00	KICK PINION ASSY	1				UR
17	5MX-E5673-00	CLIP	1				

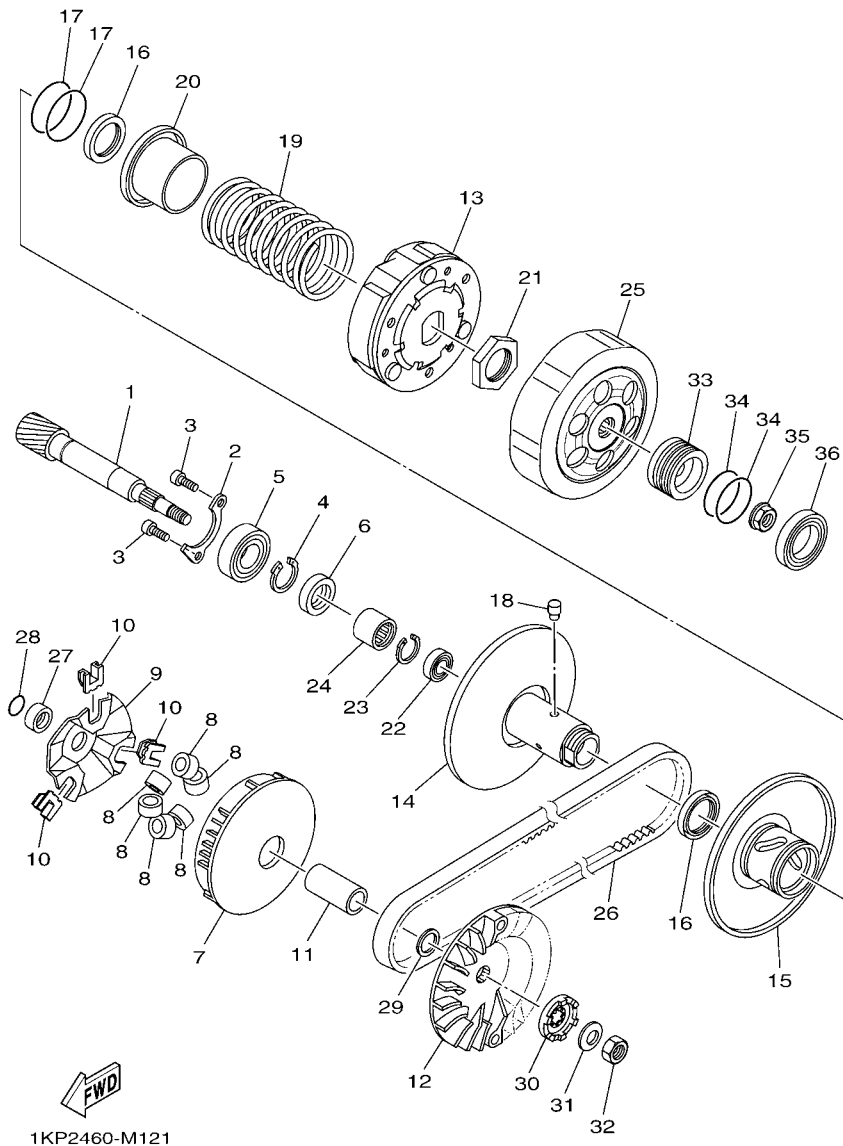


FIG. 12 CLUTCH

REF. NO.	PART NO.	DESCRIPTION	TVBI				REMARKS
1	54P-E6111-00	GEAR, PRIMARY DRIVE	1				
2	54P-E7471-00	PLATE, COVER	1				
3	91312-06010	BOLT	2				
4	99009-17400	CIRCLIP	1				
5	93306-253Y9	BEARING	1				
6	93102-17803	OIL SEAL	1				
7	54P-E7620-00	PRIMARY SLIDING SHEAVE COMP.	1				
8	54P-E7632-00	WEIGHT	6				
9	54P-E7623-00	CAM	1				
10	54P-E7653-00	SLIDER	3				
11	54P-E7674-00	COLLAR, GUIDE	1				
12	54P-E7611-00	SHEAVE, PRIMARY FIXED	1				
13	54P-E6620-00	CLUTCH CARRIER ASSY	1				
14	54P-E7660-00	SECONDARY FIXED SHEAVE COMP.	1				
15	54P-E7670-00	SECONDARY SLIDING SHEAVE	1				
16	54P-E7465-00	SEAL	2				
17	54P-E7465-10	SEAL	2				
18	5TL-E7664-00	PIN, GUIDE	3				
19	54P-E7683-00	SPRING, SECONDARY	1				
20	54P-E7684-00	SEAT, SECONDARY SPRING	1				
21	44D-E7668-00	NUT	1				
22	54P-E7678-00	BEARING	1				
23	44D-E5744-00	CIRCLIP	1				
24	54P-E7678-10	BEARING	1				
25	54P-E6611-00	CLUTCH HOUSING COMP.	1				
26	54P-E7641-00	V-BELT	1				
27	44D-E7645-00	COLLAR	1				UR

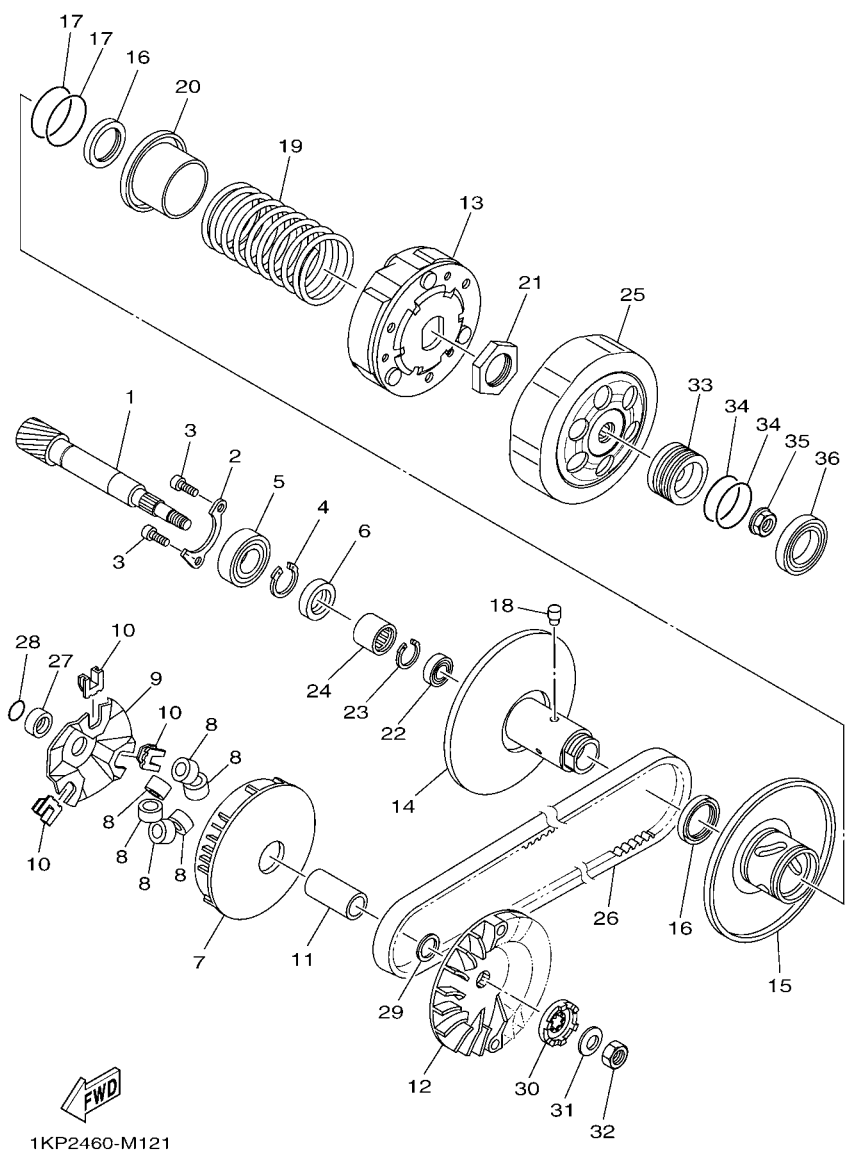
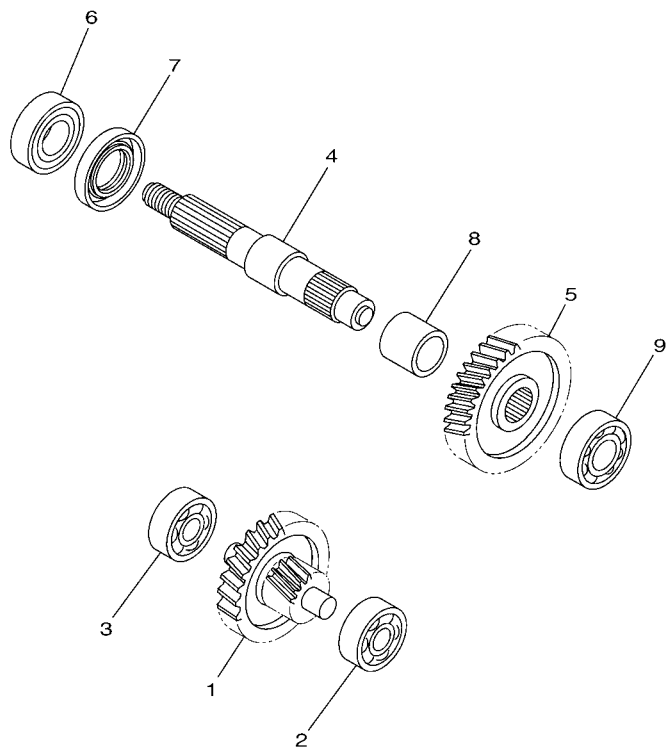


FIG. 12 CLUTCH

REF. NO.	PART NO.	DESCRIPTION	TVBT				REMARKS
27	1GC-E7645-00	COLLAR	1				UR
28	93210-16805	O-RING	1				
29	90201-15841	WASHER, PLATE	1				
30	5MX-E5657-00	CLUTCH, ONEWAY	1				
31	90208-12808	WASHER, CONICAL SPRING	1				
32	90170-12800	NUT	1				
33	54P-E7649-00	SPACER	1				UR
	54P-E7649-10	SPACER	1				UR
34	93210-258G2	O-RING	2				
35	90179-10803	NUT	1				
36	93306-006Y7	BEARING	1				UR
	93306-006Y5	BEARING	1				UR

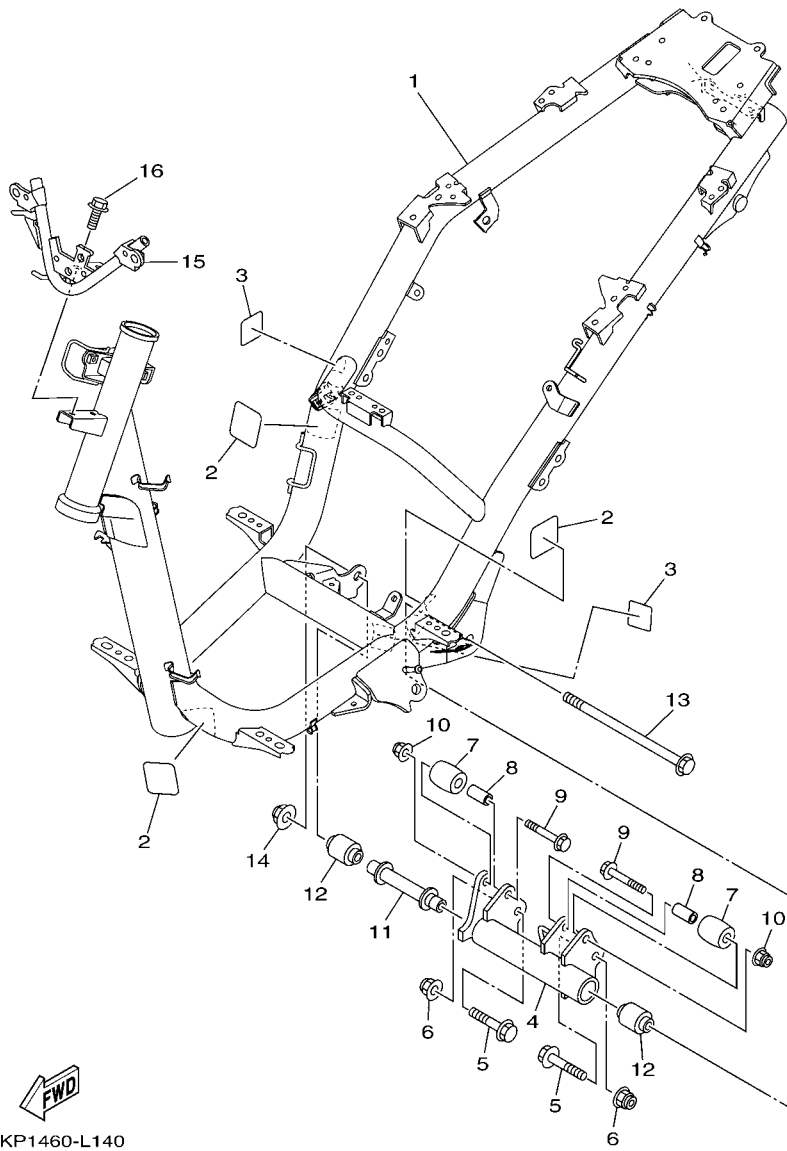
FIG. 13 TRANSMISSION



REF. NO.	PART NO.	DESCRIPTION	TVBI				REMARKS
1	54P-E7410-00	MAIN AXLE COMP. (13T/47T)	1				
2	93306-301XT	BEARING	1				
3	93306-301XT	BEARING	1				
4	54P-E7421-00	AXLE, DRIVE	1				
5	54P-E7211-00	GEAR, 1ST WHEEL (41T)	1				
6	93306-054X9	BEARING	1				
7	93102-26809	OIL SEAL	1				UR
	93102-26811	OIL SEAL	1				UR
8	54P-E7155-00	COLLAR, THRUST	1				
9	93306-253Y3	BEARING	1				



 54S1431-L130

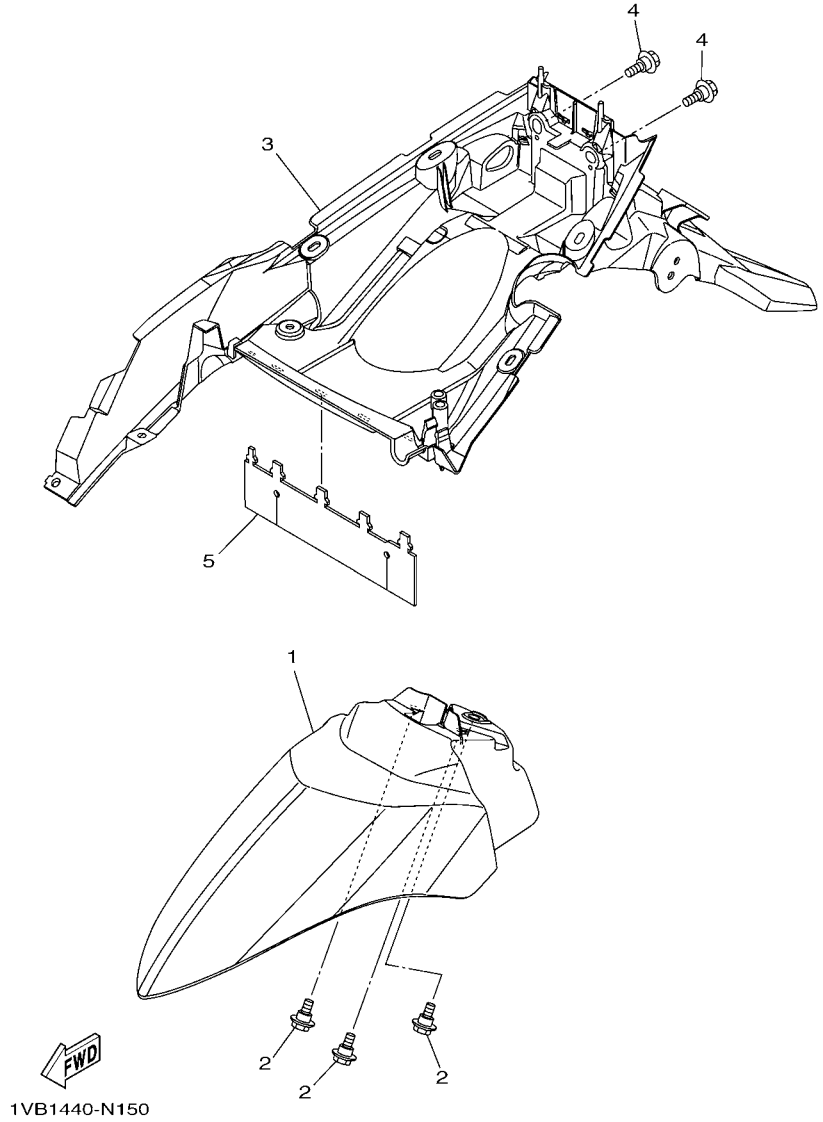


1KP1460-L140

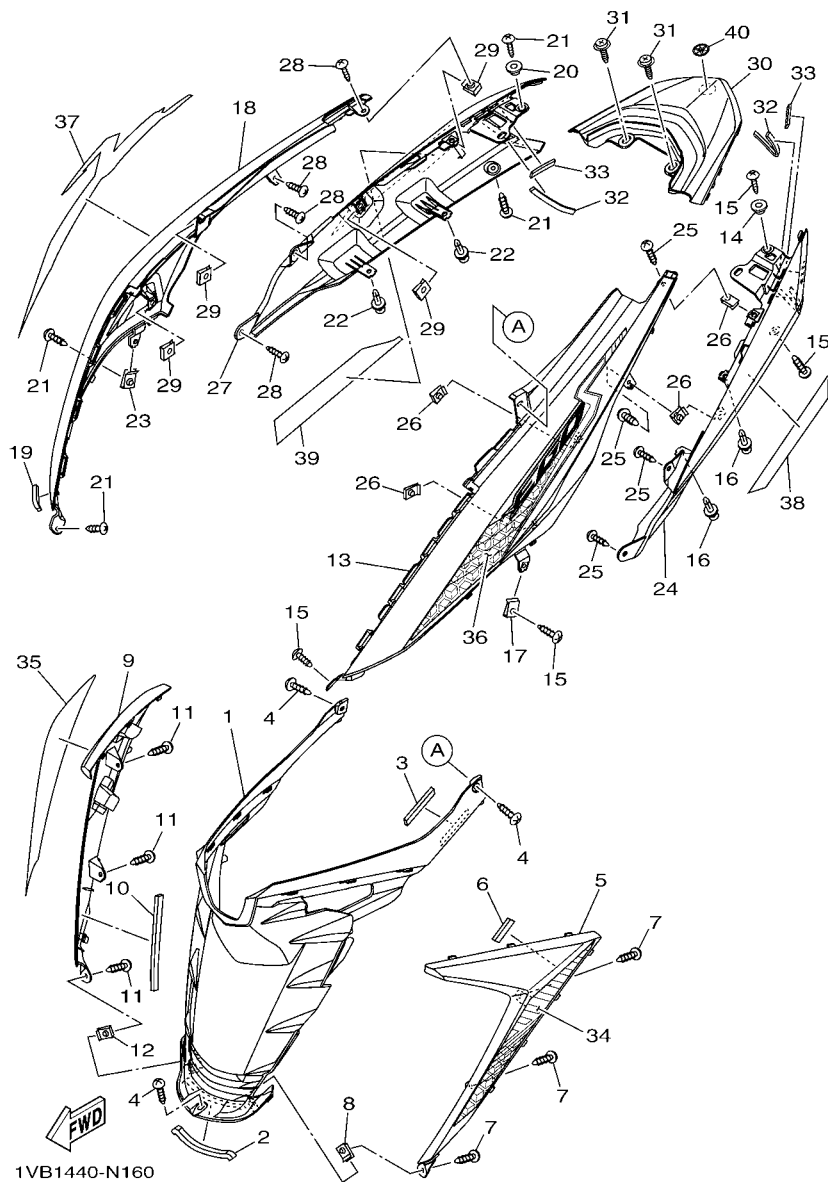
FIG. 14 FRAME

REF. NO.	PART NO.	DESCRIPTION	TVBT				REMARKS
1	1VB-F1110-00	FRAME COMP.	1				
2	1VB-F1268-00	SEAL	3				
3	1VB-F1735-00	SEAL 2	2				
4	54P-F1410-00	ENGINE BRACKET COMP.	1				
5	90105-10283	BOLT, FLANGE	2				
6	95602-10200	NUT, U FLANGE	2				
7	5P2-F7114-00	STOPPER, MAIN STAND	2				
8	90387-08821	COLLAR	2				
9	90105-088E3	BOLT, FLANGE	2				
10	95602-08200	NUT, SELF-LOCKING	2				
11	54P-F1459-00	SPACER	1				
12	90388-10800	DAMPER	2				
13	54P-F2141-00	SHAFT, PIVOT	1				
14	95602-10200	NUT, U FLANGE	1				
15	1VB-F8356-00	STAY 1	1				
16	95802-06010	BOLT, FLANGE	2				

FIG. 15 FENDER



REF. NO.	PART NO.	DESCRIPTION	1VB1			REMARKS
1	1VB-F1511-00-P0	FENDER, FRONT	1			UR FOR BWC1
	1VB-F1511-00-P1	FENDER, FRONT	1			UR FOR SMX
	1VB-F1511-00-P2	FENDER, FRONT	1			UR FOR BMC
	1VB-F1511-00-P3	FENDER, FRONT	1			UR FOR RM7
2	90109-06202	BOLT	3			
3	1VB-F1611-00	FENDER, REAR	1			
4	90109-06202	BOLT	2			
5	1VB-F1621-00	FLAP	1			



1VB1440-N160

FIG. 16 SIDE COVER

REF. NO.	PART NO.	DESCRIPTION	1VB1		REMARKS
1	1VB-F172W-00	COVER	1		
2	90520-08804	DAMPER, PLATE	1		
3	90520-02819	DAMPER, PLATE	1		
4	97707-50016	SCREW, TRUSS HEAD TAPPING	3		
5	1VB-F171L-00-P0	MOLE, SIDE COVER 1	1		DBNM8 EXCEPT RM7
	1VB-F171L-00-P1	MOLE, SIDE COVER 1	1		BWC1 FOR RM7
6	90520-02819	DAMPER, PLATE	1		
7	97707-50016	SCREW, TRUSS HEAD TAPPING	3		
8	90183-05807	NUT, SPRING	1		
9	1VB-F171M-00-P0	MOLE, SIDE COVER 2	1		DBNM8 EXCEPT RM7
	1VB-F171M-00-P1	MOLE, SIDE COVER 2	1		BWC1 FOR RM7
10	90520-08804	DAMPER, PLATE	1		
11	97707-50016	SCREW, TRUSS HEAD TAPPING	3		
12	90183-05807	NUT, SPRING	1		
13	1VB-F1711-00-P0	COVER, SIDE 1	1		UR FOR BWC1
	1VB-F1711-00-P1	COVER, SIDE 1	1		UR FOR SMX
	1VB-F1711-00-P3	COVER, SIDE 1	1		UR FOR RM7
	1VB-F1711-00-P2	COVER, SIDE 1	1		UR FOR BMC
14	90387-05820	COLLAR	1		
15	97707-50016	SCREW, TRUSS HEAD TAPPING	4		
16	90269-06812	RIVET	2		
17	90183-05807	NUT, SPRING	1		
18	1VB-F1721-00-P0	COVER, SIDE 2	1		UR FOR BWC1
	1VB-F1721-00-P1	COVER, SIDE 2	1		UR FOR SMX
	1VB-F1721-00-P3	COVER, SIDE 2	1		UR FOR RM7
	1VB-F1721-00-P2	COVER, SIDE 2	1		UR FOR BMC
19	90520-05812	DAMPER, PLATE	1		

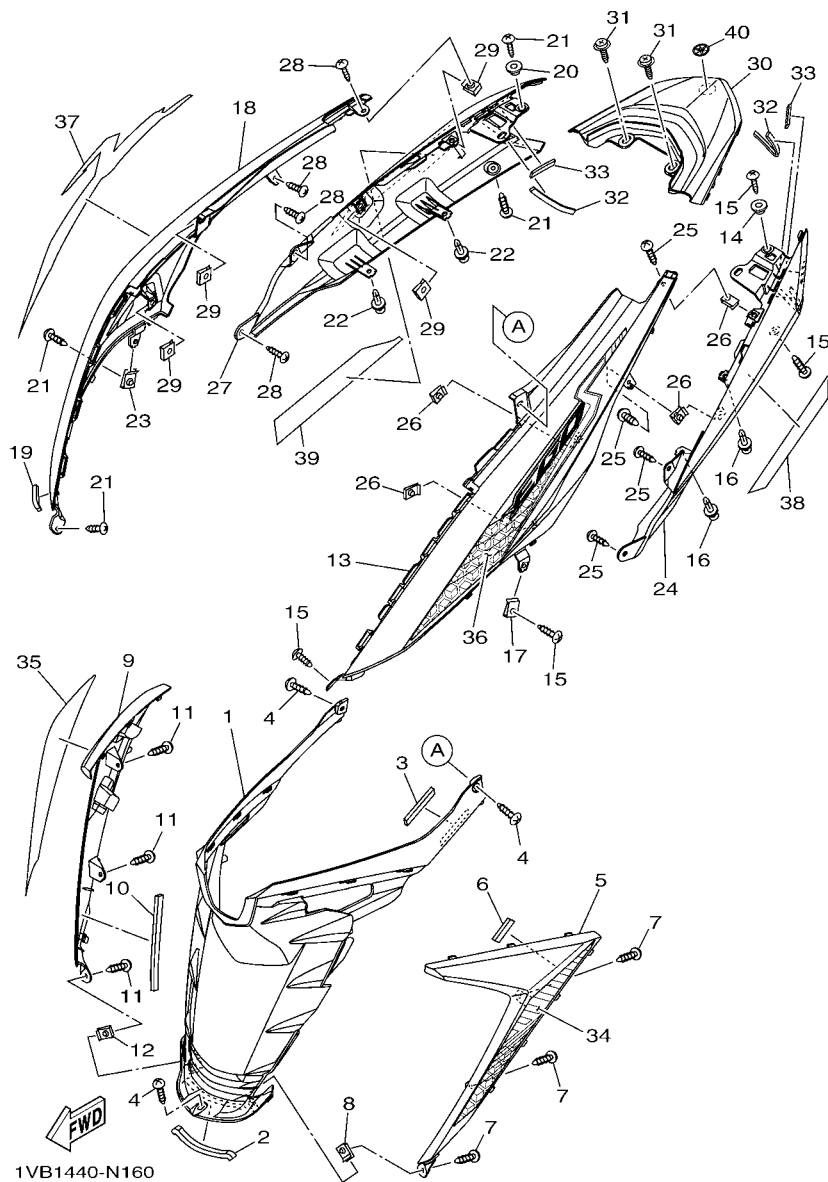


FIG. 16 SIDE COVER

REF. NO.	PART NO.	DESCRIPTION	1VB1			REMARKS
20	90387-05820	COLLAR	1			
21	97707-50016	SCREW, TRUSS HEAD TAPPING	4			
22	90269-06812	RIVET	2			
23	90183-05807	NUT, SPRING	1			
24	1VB-F1731-00-P0	COVER, SIDE 3	1			SMX EXCEPT SMX
	1VB-F1731-00-7B	COVER, SIDE 3	1			BIB2 FOR SMX
25	97707-50012	SCREW, TRUSS HEAD TAPPING	4			
26	90183-05807	NUT, SPRING	4			
27	1VB-F1741-00-P0	COVER, SIDE 4	1			SMX EXCEPT SMX
	1VB-F1741-00-7B	COVER, SIDE 4	1			BIB2 FOR SMX
28	97707-50012	SCREW, TRUSS HEAD TAPPING	4			
29	90183-05807	NUT, SPRING	4			
30	1VB-F171E-00-P0	COVER, SIDE 5	1			UR FOR BWC1
	1VB-F171E-00-P1	COVER, SIDE 5	1			UR FOR SMX
	1VB-F171E-00-P3	COVER, SIDE 5	1			UR FOR RM7
	1VB-F171E-00-P2	COVER, SIDE 5	1			UR FOR BMC
31	90159-06810	SCREW, WITH WASHER	2			
32	90520-02825	DAMPER, PLATE	2			
33	90520-02819	DAMPER, PLATE	2			
34	1VB-F173E-00	GRAPHIC 1	1			UR FOR BWC1
	1VB-F173E-10	GRAPHIC 1	1			UR FOR SMX
	1VB-F173E-20	GRAPHIC 1	1			UR FOR RM7
	1VB-F173E-30	GRAPHIC 1	1			UR FOR BMC
35	1VB-F173F-00	GRAPHIC 2	1			UR FOR BWC1
	1VB-F173F-10	GRAPHIC 2	1			UR FOR SMX
	1VB-F173F-20	GRAPHIC 2	1			UR FOR RM7
	1VB-F173F-30	GRAPHIC 2	1			UR FOR BMC

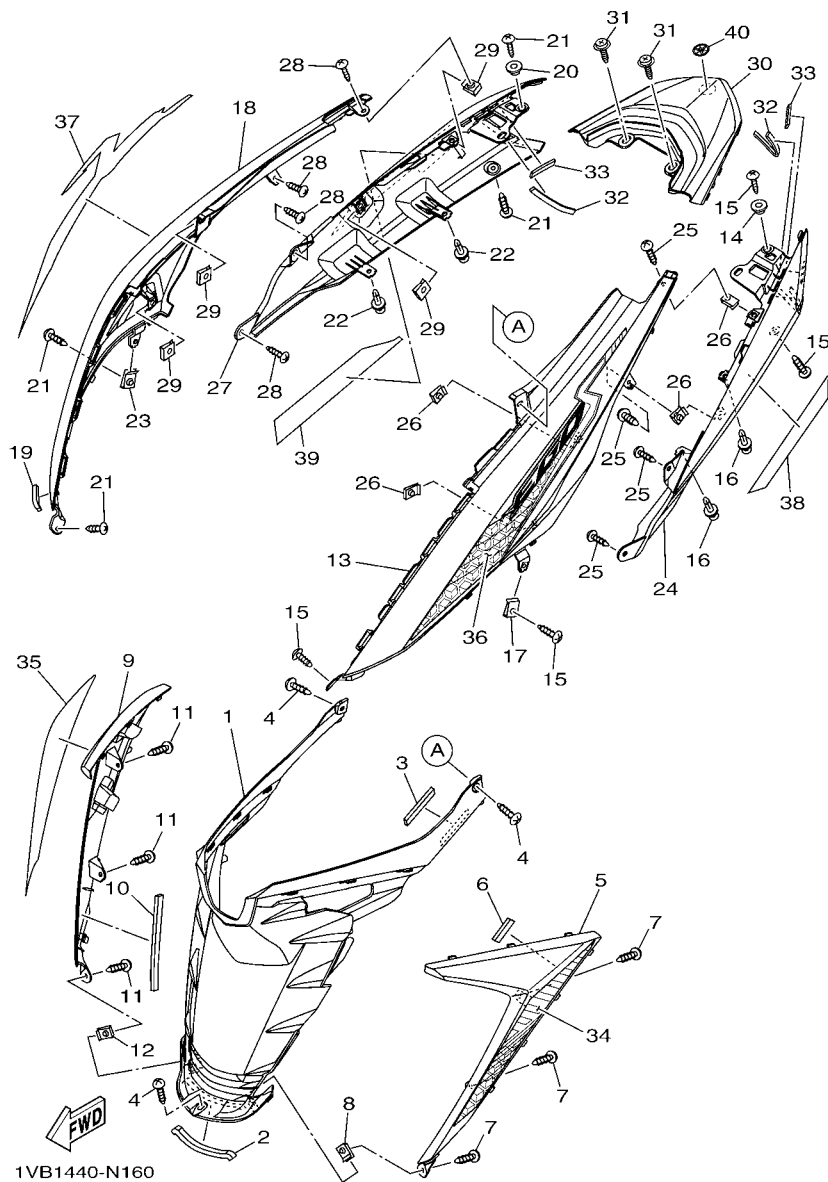
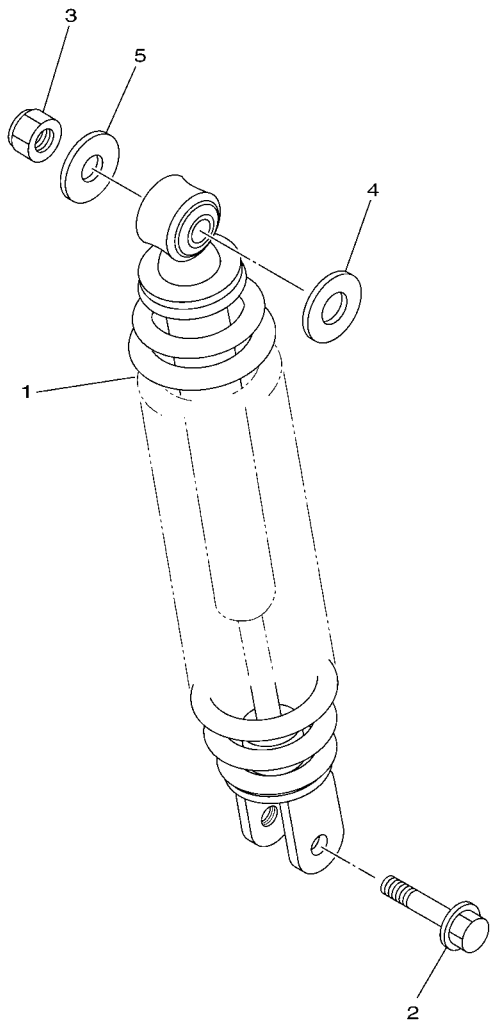


FIG. 16 SIDE COVER

REF. NO.	PART NO.	DESCRIPTION	1VB1			REMARKS
36	1VB-F174G-00	GRAPHIC 3	1			UR FOR BWC1
	1VB-F174G-10	GRAPHIC 3	1			UR FOR SMX
	1VB-F174G-20	GRAPHIC 3	1			UR FOR RM7
	1VB-F174G-30	GRAPHIC 3	1			UR FOR BMC
37	1VB-F174H-00	GRAPHIC 4	1			UR FOR BWC1
	1VB-F174H-10	GRAPHIC 4	1			UR FOR SMX
	1VB-F174H-20	GRAPHIC 4	1			UR FOR RM7
	1VB-F174H-30	GRAPHIC 4	1			UR FOR BMC
38	1VB-F174J-00	GRAPHIC 5	1			UR FOR BWC1
	1VB-F174J-10	GRAPHIC 5	1			UR FOR SMX
	1VB-F174J-20	GRAPHIC 5	1			UR FOR RM7
	1VB-F174J-30	GRAPHIC 5	1			UR FOR BMC
39	1VB-F174K-00	GRAPHIC 6	1			UR FOR BWC1
	1VB-F174K-10	GRAPHIC 6	1			UR FOR SMX
	1VB-F174K-20	GRAPHIC 6	1			UR FOR RM7
	1VB-F174K-30	GRAPHIC 6	1			UR FOR BMC
40	1VB-F175C-00	TUNING FORK MARK	1			



54S1431-L170

FIG. 17 REAR ARM & SUSPENSION

REF. NO.	PART NO.	DESCRIPTION	TVBI				REMARKS
1	10C-F2210-20	SHOCK ABSORBER ASSY, REAR	1				
2	90105-08861	BOLT, FLANGE	1				
3	95302-10600	NUT	1				
4	90201-12028	WASHER, PLATE	1				
5	90201-10065	WASHER, PLATE	1				

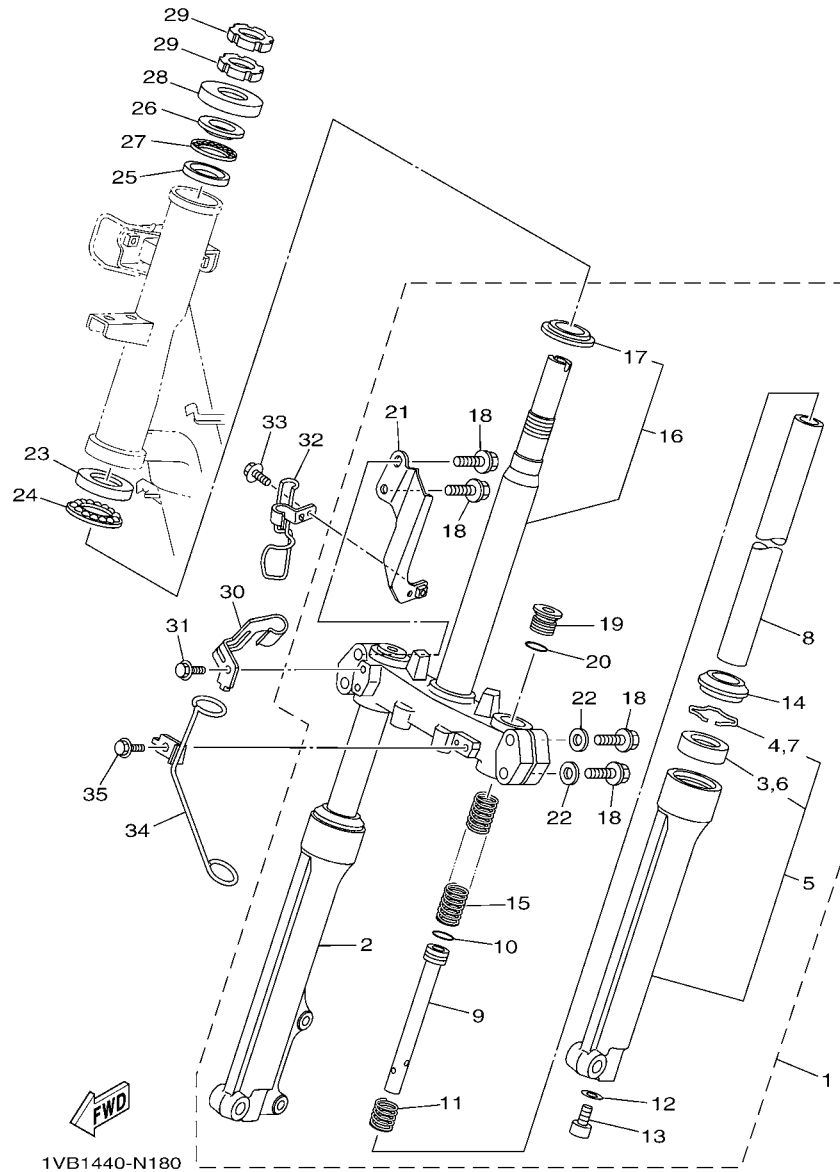


FIG. 18 STEERING

REF. NO.	PART NO.	DESCRIPTION	1VB1				REMARKS
1	1VB-F3100-00	FRONT FORK ASSY	1				
2	1VB-F3136-00	.TUBE, OUTER	1				
3	4UV-F3145-00	..OIL SEAL	1				
4	5P0-F3156-00	..RING, SNAP	1				
5	1VB-F3126-00	.TUBE, OUTER (L.H)	1				
6	4UV-F3145-00	..OIL SEAL	1				
7	5P0-F3156-00	..RING, SNAP	1				
8	5VW-F3110-00	.INNER TUBE COMP.1	2				
9	1VB-F3170-00	.CYLINDER COMP., FRONT FORK	2				
10	2JG-F3157-00	.RING, PISTON	2				
11	31D-F3152-00	.SPRING, SUB	2				
12	509-F3158-L0	.GASKET	2				
13	31B-F3181-00	.BOLT, HEXAGON SOCKET HEAD	2				
14	5LL-F3144-00	.SEAL, DUST	2				
15	1VB-F3141-00	.SPRING, FRONT FORK	2				
16	4D0-F3340-00	.UNDER BRACKET COMP.	1				
17	156-F3411-00	..RACE, BALL 1	1				
18	4D0-F3346-00	.BOLT 1	4				
19	5VW-F3111-00	.BOLT, CAP	2				
20	2JG-F3147-00	.O-RING	2				
21	1VB-F334G-00	.BRACKET 1	1				
22	4D0-F3165-00	.WASHER, FELT	2				
23	156-23412-00	RACE, BALL 2	1				
24	5TL-2341E-00	RETAINER, BALL BEARING (16)	1				
25	22F-23412-01	RACE, BALL 2	1				
26	22F-23411-01	RACE, BALL 1	1				
27	5TL-2341E-10	RETAINER, BALL BEARING (19)	1				

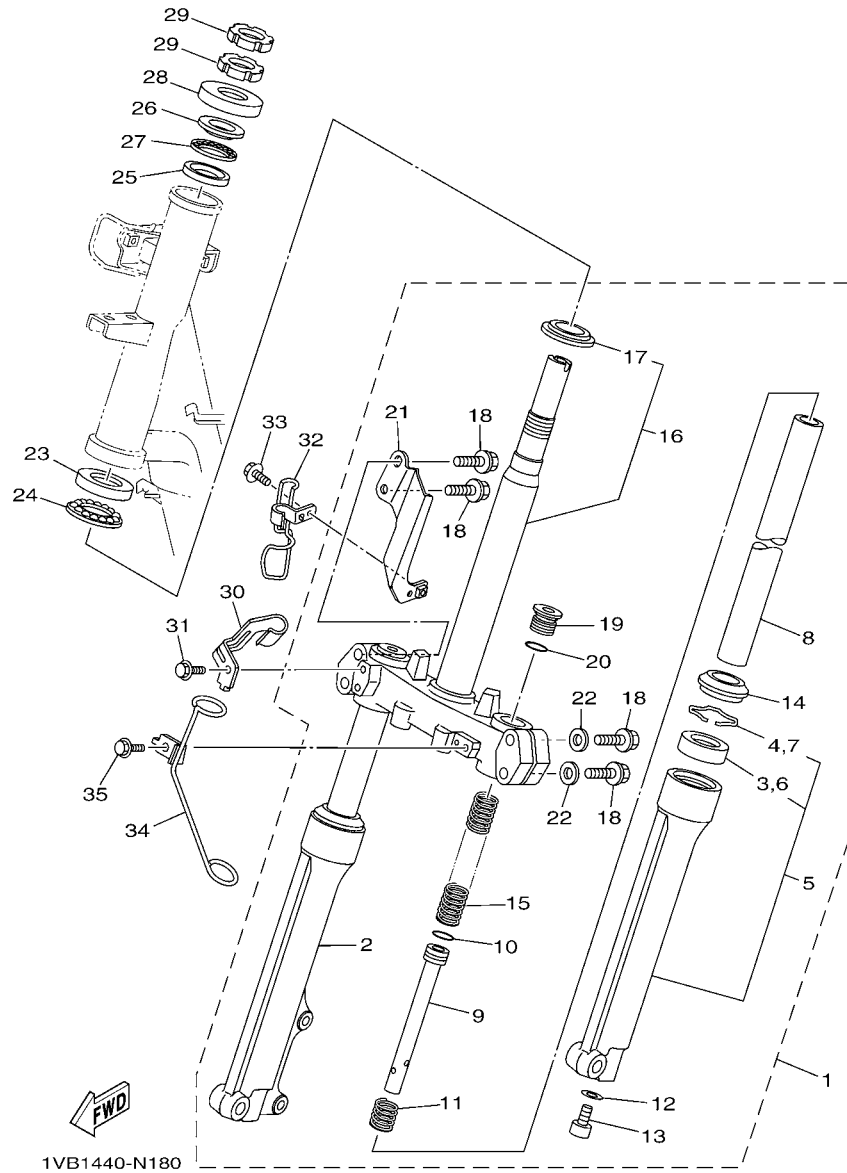
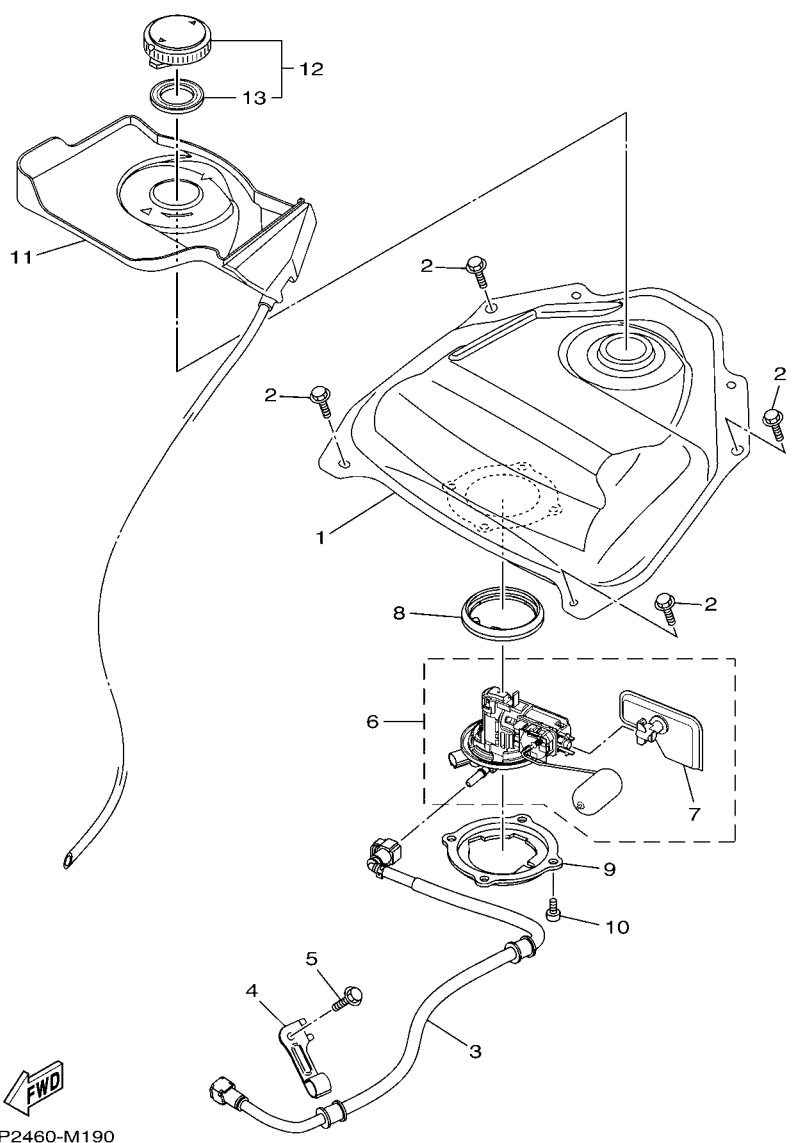


FIG. 18 STEERING

REF. NO.	PART NO.	DESCRIPTION	1VB1				REMARKS
28	5TL-F3416-00	COVER, BALL RACE 2	1				
29	90179-25802	NUT	2				
30	1VB-F5875-00	HOLDER, BRAKE HOSE 1	1				
31	95802-06010	BOLT, FLANGE	1				
32	1VB-F5876-00	HOLDER, BRAKE HOSE 2	1				
33	95802-06010	BOLT, FLANGE	1				
34	1VB-F1161-00	HOLDER, CABLE	1				
35	95802-06010	BOLT, FLANGE	1				



1KP2460-M190

FIG. 19 FUEL TANK

REF. NO.	PART NO.	DESCRIPTION	TVBI			REMARKS
1	1VB-F4110-00	FUEL TANK COMP.	1			
2	90119-06044	BOLT, WITH WASHER	4			
3	54P-E3971-00	PIPE, FUEL 1	1			
4	1VB-F419F-00	BRACKET, CANISTOR	1			
5	95022-06010	BOLT, FLANGE	1			
6	54P-E3907-11	FUEL PUMP COMP.	1			
7	54P-E3915-00	.FILTER	1			
8	54P-F414G-00	SEAL	1			
9	54P-F4491-00	BRACKET, FUEL PUMP	1			
10	91312-05010	BOLT	4			
11	1VB-F414A-00	COVER, FILLER	1			
12	4YY-F4610-00	CAP ASSY	1			
13	4YY-F4612-00	.PACKING, CAP	1			

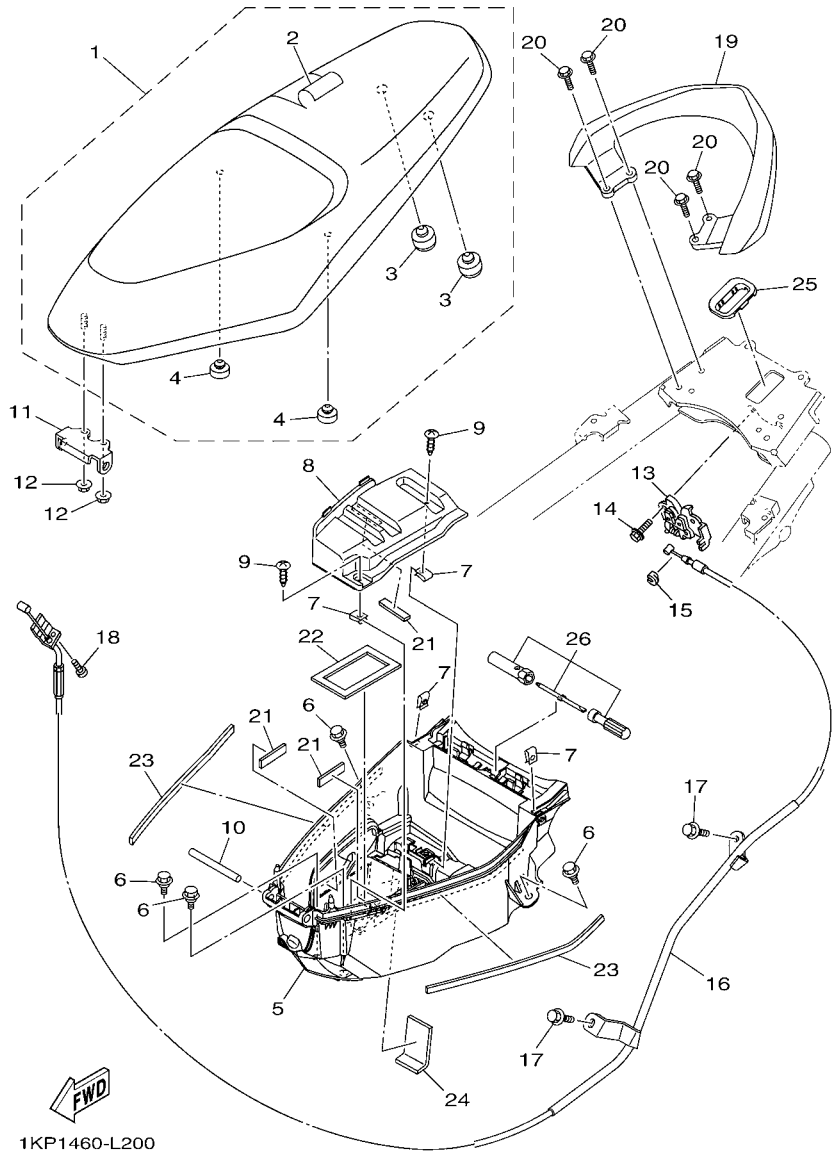
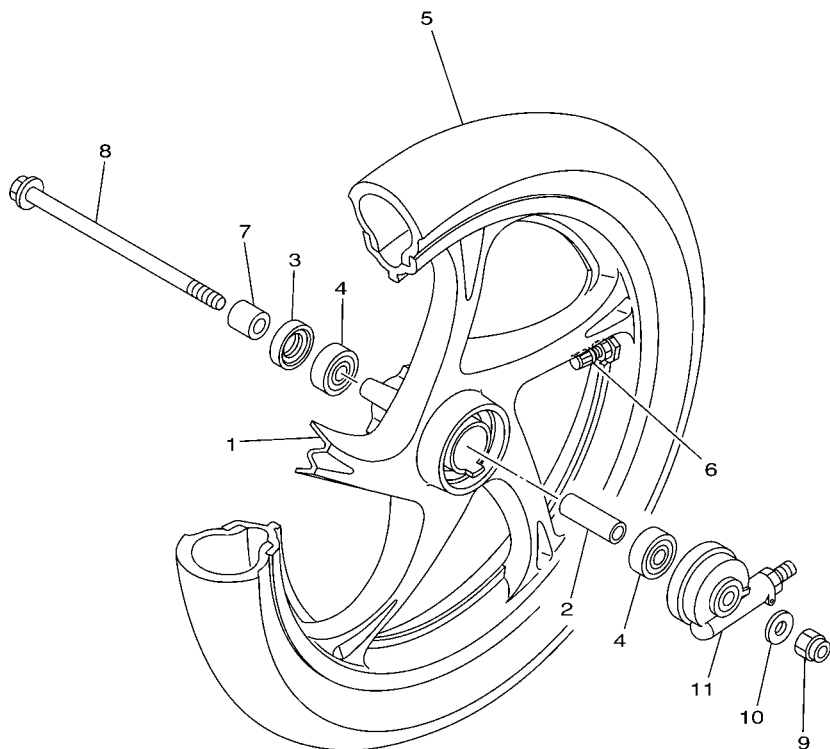


FIG. 20 SEAT

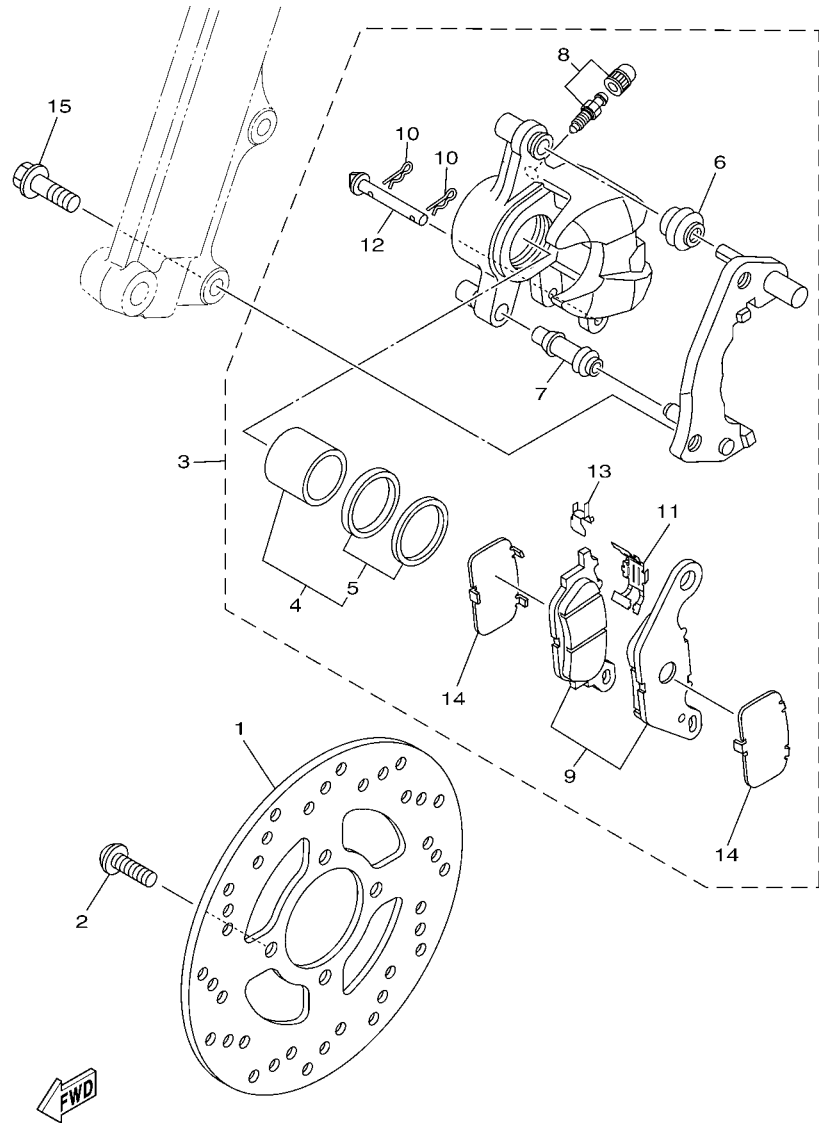
REF. NO.	PART NO.	DESCRIPTION	TVBI				REMARKS
1	1VB-F4730-00	DOUBLE SEAT ASSY	1				
2	1VB-F470F-00	.SEAT COVER COMP.	1				
3	1VB-F4741-00	.PAD, SEAT	2				
4	44P-F4741-00	.PAD, SEAT	2				
5	1VB-F4704-00	BOX ASSY	1				
6	90109-06202	BOLT	4				
7	90183-05807	NUT, SPRING	4				
8	1VB-H2129-00	COVER, BATTERY	1				
9	97707-50012	SCREW, TRUSS HEAD TAPPING	2				
10	5VV-F4727-00	PIN, SEAT FITTING	1				
11	1VB-F4726-00	HINGE, SEAT	1				
12	95702-06500	NUT, FLANGE	2				
13	5P0-F4780-01	SEAT LOCK ASSY	1				
14	95022-06010	BOLT, FLANGE	2				
15	1S8-F4768-00	STOPPER	1				
16	1VB-F478E-00	CABLE, SEAT LOCK	1				
17	95802-06010	BOLT, FLANGE	2				
18	98507-05010	SCREW, PAN HEAD	1				
19	1VB-F4773-00-P0	HANDLE, SEAT	1				DBNM8
20	95822-06020	BOLT, FLANGE	4				
21	90520-03806	DAMPER, PLATE	3				
22	1VB-H2176-00	DAMPER	1				
23	90520-03809	DAMPER, PLATE	2				
24	90520-03808	DAMPER, PLATE	1				
25	1VB-F476U-00	PROTECTOR 1	1				
26	1VB-F8100-00	TOOL KIT	1				

FIG. 21 FRONT WHEEL



REF. NO.	PART NO.	DESCRIPTION	TVBI				REMARKS
1	1VB-F5168-00-33	CAST WHEEL, FRONT	1				YB
2	90560-10292	SPACER	1				
3	93106-20808	OIL SEAL	1				
4	93306-300X8	BEARING	2				
5	94107-14807	TIRE (70/90-14 M/C 34P V282F)	1				VEE RUBBER
6	93900-00817	VALVE, RIM (TR412)	1				
7	90387-10837	COLLAR	1				
8	3NA-F5181-01	AXLE, WHEEL	1				
9	90185-10811	NUT, SELF-LOCKING	1				
10	90201-10831	WASHER, PLATE	1				
11	5VV-F5190-01	GEAR UNIT ASSY	1				

FWD
5VW3440-C220

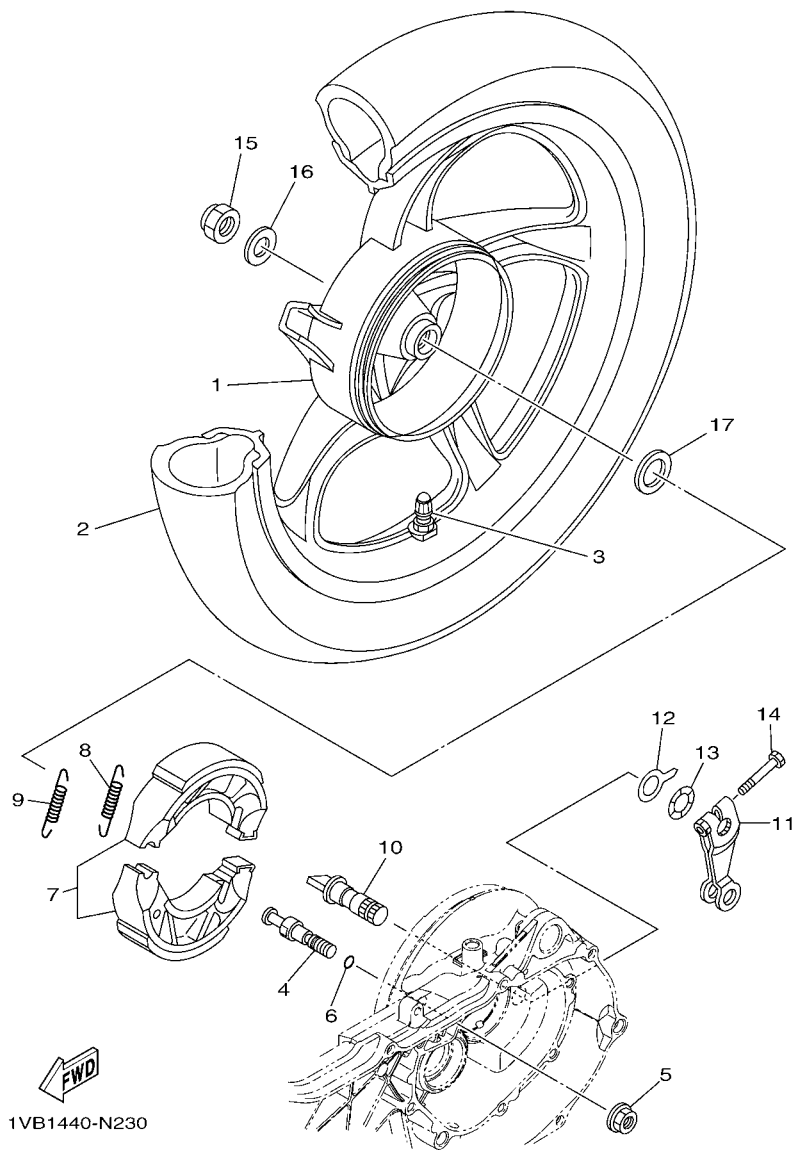


1VB1440-N220

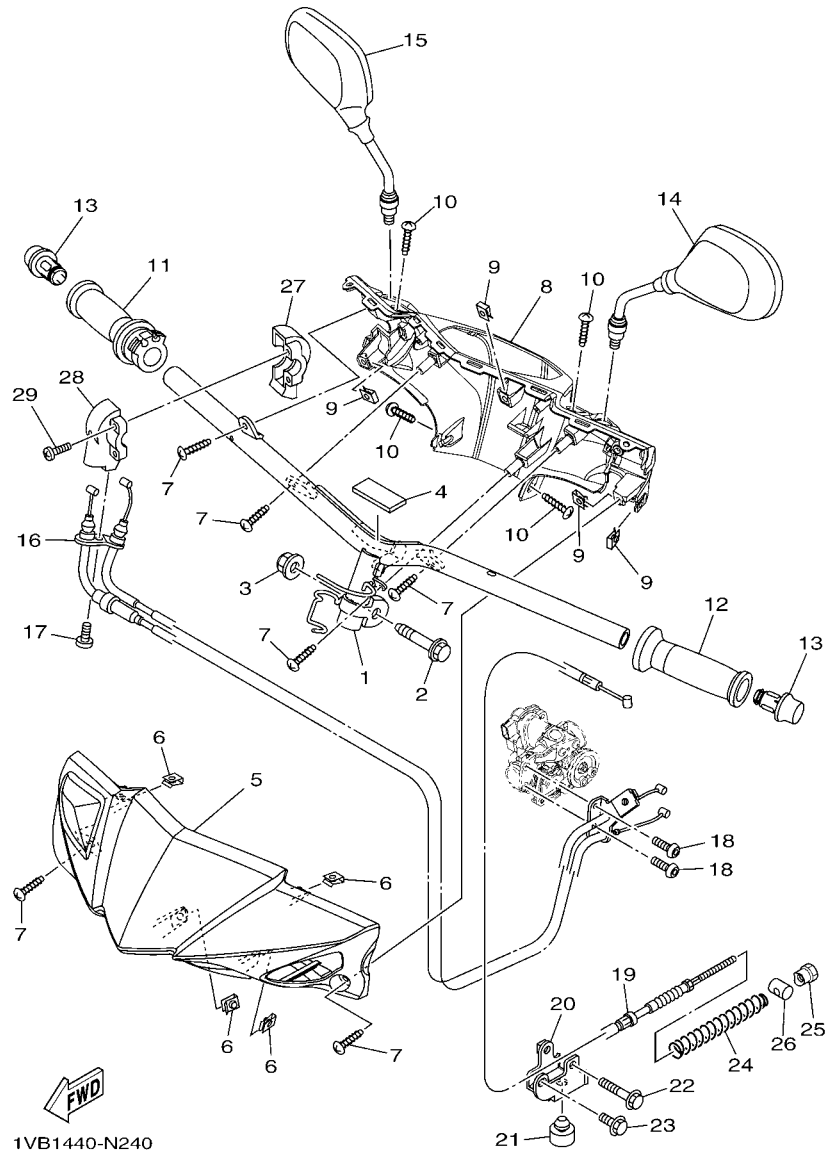
FIG. 22 FRONT BRAKE CALIPER

REF. NO.	PART NO.	DESCRIPTION	TVBI				REMARKS
1	5TL-F582U-10	DISK, BRAKE (RIGHT)	1				
2	90111-08853	BOLT,HEX. SOCKET BUTTON	4				
3	44S-F580U-01	CALIPER ASSY (RIGHT)	1				
4	5P0-F5802-00	.PISTON ASSY, CALIPER	1				
5	5YP-F5803-50	..CALIPER SEAL KIT	1				
6	5YP-F5917-00	.BOOT, CALIPER	1				
7	5YP-F5937-00	.BOOT 2	1				
8	4C9-W0048-00	.BLEED SCREW KIT	1				
9	3C1-F5805-10	.BRAKE PAD KIT	1				
10	5YP-F5925-01	.CLIP	2				
11	5P0-F5919-00	.SUPPORT, PAD	1				
12	5YP-F5924-00	.PIN, PAD	1				
13	5YP-F5939-00	.CLIP, PAD	1				
14	5P0-F5827-00	.SHIM, CALIPER	2				
15	90105-10831	BOLT, FLANGE	2				

FIG. 23 REAR WHEEL



REF. NO.	PART NO.	DESCRIPTION	TVBI				REMARKS
1	5VW-F5338-01-33	CAST WHEEL, REAR	1				YB
2	94108-14809	TIRE (80/90-14 M/C 46P V280R)	1				VEE RUBBER
3	93900-00817	VALVE, RIM (TR412)	1				
4	54P-F5326-00	PIN, PIVOT	1				
5	95702-10500	NUT, FLANGE	1				
6	93210-07802	O-RING	1				
7	5LW-F530K-00	BRAKE SHOE SET	1				
8	90506-12001	SPRING, TENSION	1				
9	90506-15001	SPRING, TENSION	1				
10	10C-F5351-00	CAMSHAFT	1				
11	10C-F5355-00	LEVER, CAMSHAFT	1				
12	5LW-F533A-00	PLATE, INDICATOR	1				
13	90206-14093	WASHER, WAVE	1				
14	90101-06046	BOLT	1				
15	90185-14081	NUT, SELF-LOCKING	1				
16	90201-14820	WASHER, PLATE	1				
17	90201-20276	WASHER, PLATE (T=1.0)	1				



1VB1440-N240

FIG. 24 STEERING HANDLE & CABLE

REF. NO.	PART NO.	DESCRIPTION	1VB1				REMARKS
1	1VB-F6110-00	HANDLE COMP.	1				
2	90105-10896	BOLT, FLANGE	1				
3	90185-10011	NUT, SELF-LOCKING	1				
4	90520-02813	DAMPER, PLATE	1				
5	1VB-F6143-00-P0	COVER, HANDLE UPPER 1	1				DBNM8 EXCEPT RM7
	1VB-F6143-00-P1	COVER, HANDLE UPPER 1	1				BWC1 FOR RM7
6	90183-05807	NUT, SPRING	4				
7	97707-50016	SCREW, TRUSS HEAD TAPPING	6				
8	1VB-F6145-00	COVER, HANDLE UPPER 2	1				
9	90183-05807	NUT, SPRING	4				
10	97707-50016	SCREW, TRUSS HEAD TAPPING	4				
11	44P-F6240-00	GRIP ASSY	1				
12	44P-F6241-00	GRIP	1				
13	1VB-F6246-00	END, GRIP	2				
14	5LW-F6280-10	REAR VIEW MIRROR ASSY (LEFT)	1				
15	5LW-F6290-10	REAR VIEW MIRROR ASSY (RIGHT)	1				
16	1VB-F6301-00	THROTTLE CABLE ASSY	1				
17	92012-05016	BOLT, BUTTON HEAD	1				
18	92012-05010	BOLT, BUTTON HEAD	2				
19	1VB-F6351-00	CABLE, BRAKE	1				
20	1VB-F637G-00	HOLDER, WIRE	1				
21	1VB-F7114-00	STOPPER, MAIN STAND	1				
22	95022-06040	BOLT, FLANGE	1				
23	95022-06014	BOLT, FLANGE	1				
24	90501-16003	SPRING, COMPRESSION	1				
25	90179-06411	NUT	1				
26	90249-12008	PIN	1				

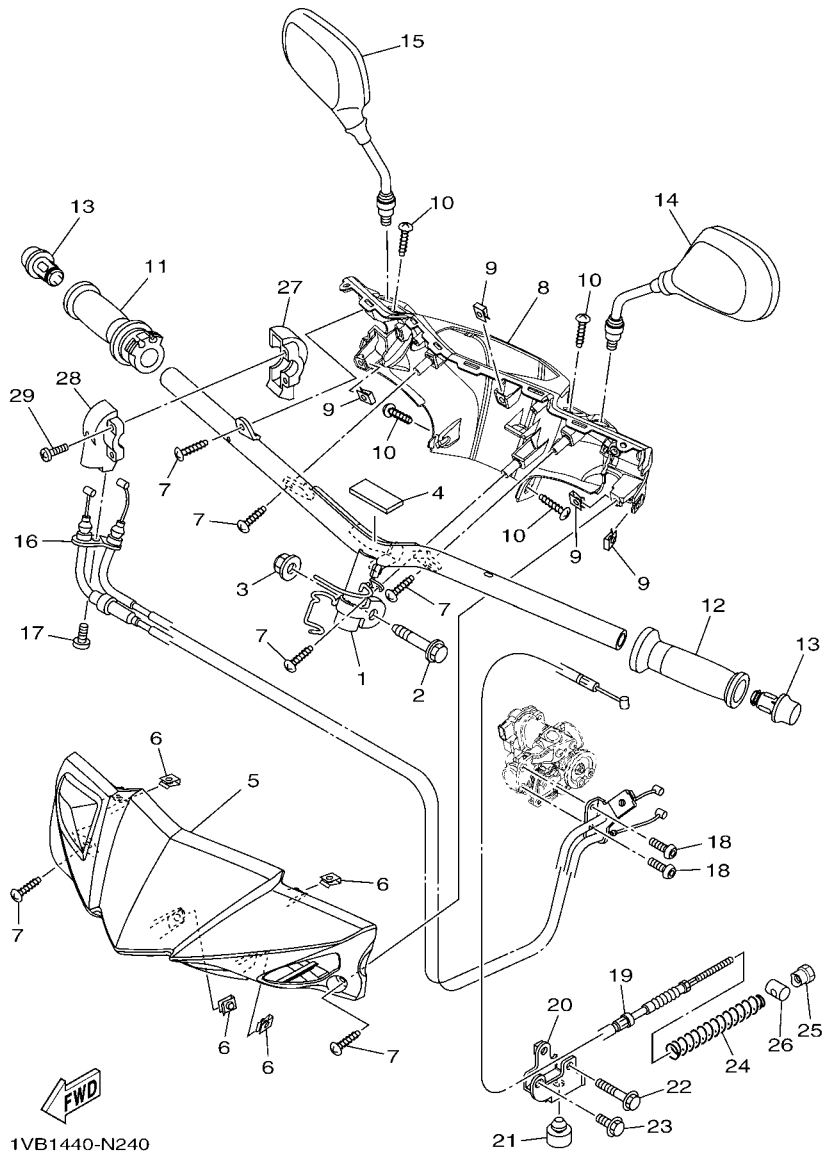
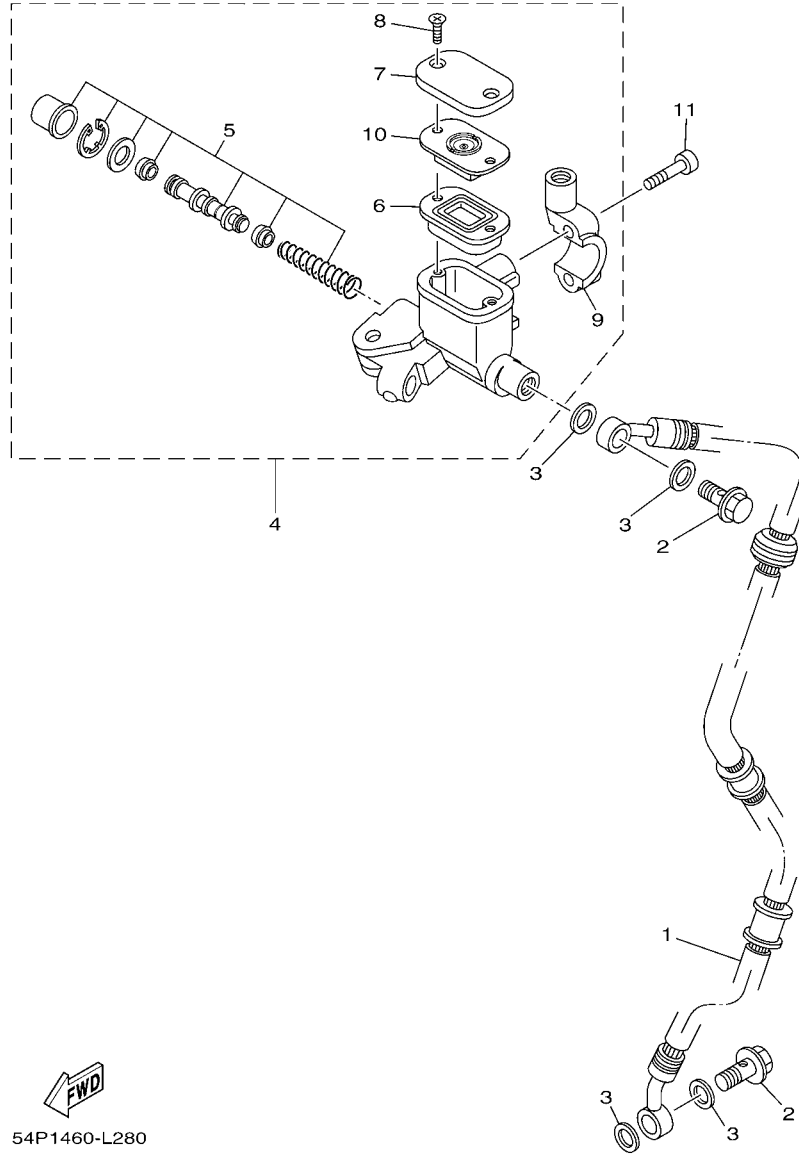


FIG. 24 STEERING HANDLE & CABLE

REF. NO.	PART NO.	DESCRIPTION	1VB1				REMARKS
27	5P2-F6281-00	CAP, GRIP UPPER	1				
28	5P2-F6282-00	CAP, GRIP UNDER	1				
29	98502-05025	SCREW, PAN HEAD	2				



54P1460-L280

FIG. 25 FRONT MASTER CYLINDER

REF. NO.	PART NO.	DESCRIPTION	TVBT				REMARKS
1	1KP-F5872-00	HOSE, BRAKE 1	1				
2	90401-10159	BOLT, UNION	2				
3	90201-10118	WASHER, PLATE	4				
4	5P0-F583T-03	MASTER CYLINDER ASSY	1				
5	5P0-W0041-00	.CYLINDER KIT, MASTER	1				
6	5P0-F5854-00	.DIAPHRAGM, RESERVOIR	1				
7	5P0-F5852-00	.CAP, RESERVOIR	1				
8	36Y-2589H-00	.SCREW	2				
9	5TL-F5867-01	.BRACKET, MASTER CYLINDER	1				
10	5P0-F5855-00	.BUSH,DIAPHRAGM	1				
11	91312-06025	BOLT	2				

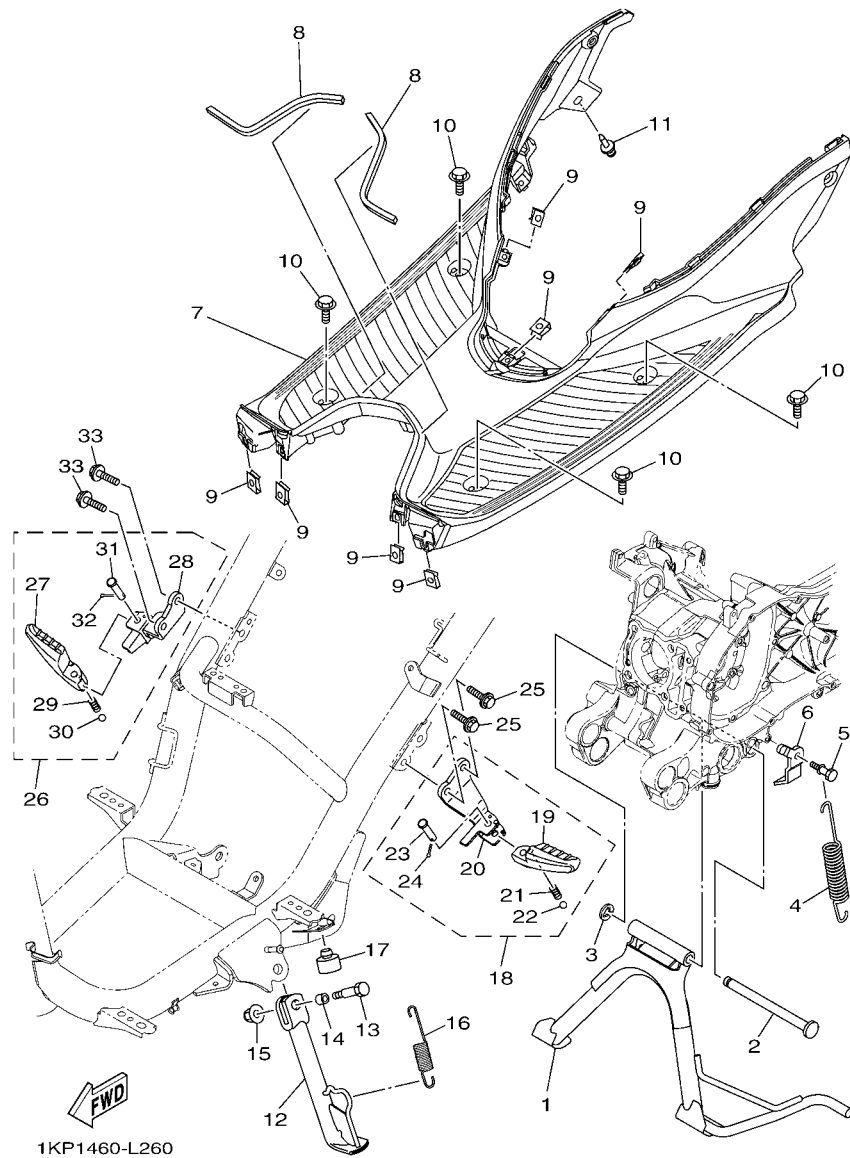


FIG. 26 STAND & FOOTREST

REF. NO.	PART NO.	DESCRIPTION	1VB1				REMARKS
1	1VB-F7111-00	STAND, MAIN	1				
2	54P-F7112-00	SHAFT, MAIN STAND	1				
3	99002-08600	CLIP	1				
4	90506-35821	SPRING, TENSION	1				
5	5LW-F7254-00	HOOK	1				
6	1VB-F7267-00	GUIDE, WIRE	1				
7	1VB-F7481-00	BOARD, FOOTREST	1				
8	90520-08802	DAMPER, PLATE	2				
9	90183-05807	NUT, SPRING	7				
10	90119-06044	BOLT, WITH WASHER	4				
11	90269-06812	RIVET	1				
12	1VB-F7311-00	STAND, SIDE	1				
13	90101-08847	BOLT	1				
14	90387-08820	COLLAR	1				
15	95602-08200	NUT, SELF-LOCKING	1				
16	90506-20514	SPRING, TENSION	1				
17	5VW-F7214-00	STOPPER	1				
18	1VB-F7430-00	REAR FOOTREST ASSY 1	1				
19	1VB-F7431-00	.FOOTREST, REAR 1	1				
20	1VB-F7432-00	.BRACKET 1	1				
21	90501-12743	.SPRING, COMPRESSION	1				
22	93501-04011	.BALL	1				
23	91701-08035	.PIN	1				
24	90252-23800	.PIN, COTTER	1				
25	95802-08030	BOLT, FLANGE	2				
26	1VB-F7440-00	REAR FOOTREST ASSY 2	1				
27	1VB-F7441-00	.FOOTREST, REAR 2	1				

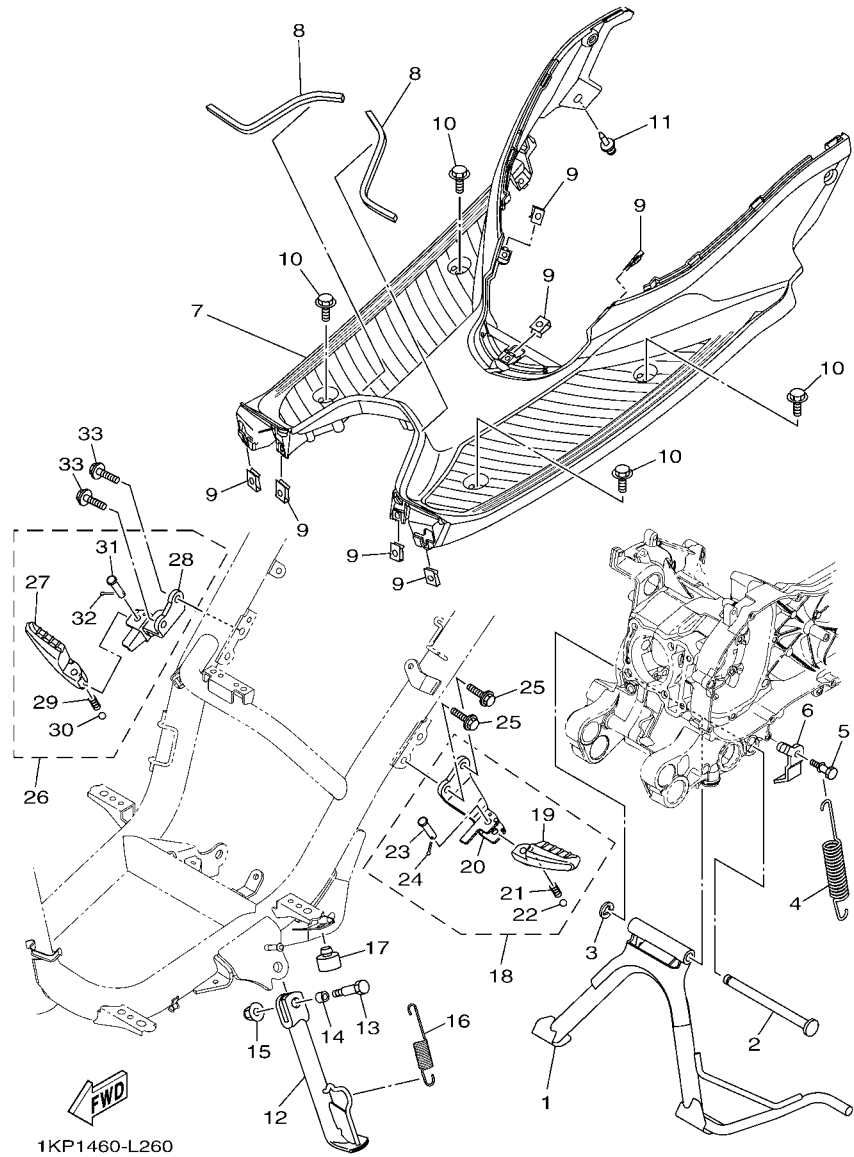


FIG. 26 STAND & FOOTREST

REF. NO.	PART NO.	DESCRIPTION	TVBI				REMARKS
28	1VB-F7442-00	.BRACKET 2	1				
29	90501-12743	.SPRING, COMPRESSION	1				
30	93501-04011	.BALL	1				
31	91701-08035	.PIN	1				
32	90252-23800	.PIN, COTTER	1				
33	95802-08030	BOLT, FLANGE	2				
<hr/>							
<hr/>							
<hr/>							
<hr/>							
<hr/>							
<hr/>							
<hr/>							
<hr/>							
<hr/>							
<hr/>							

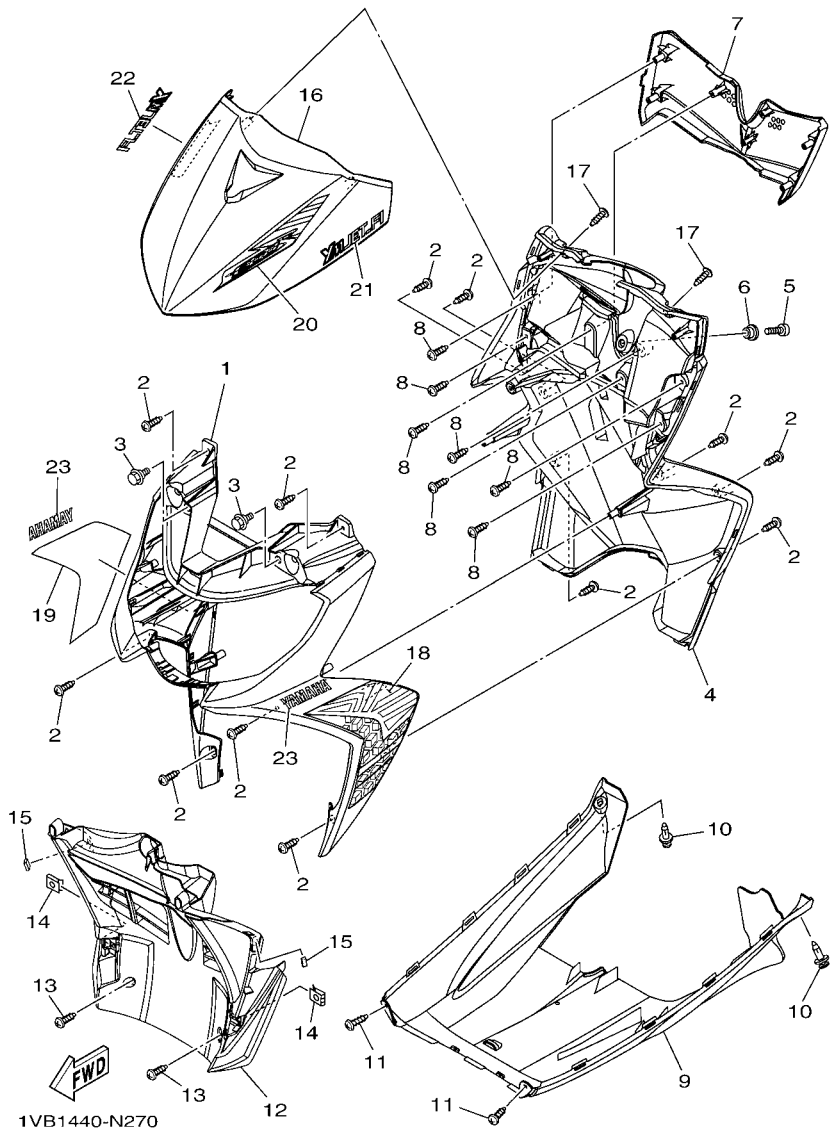
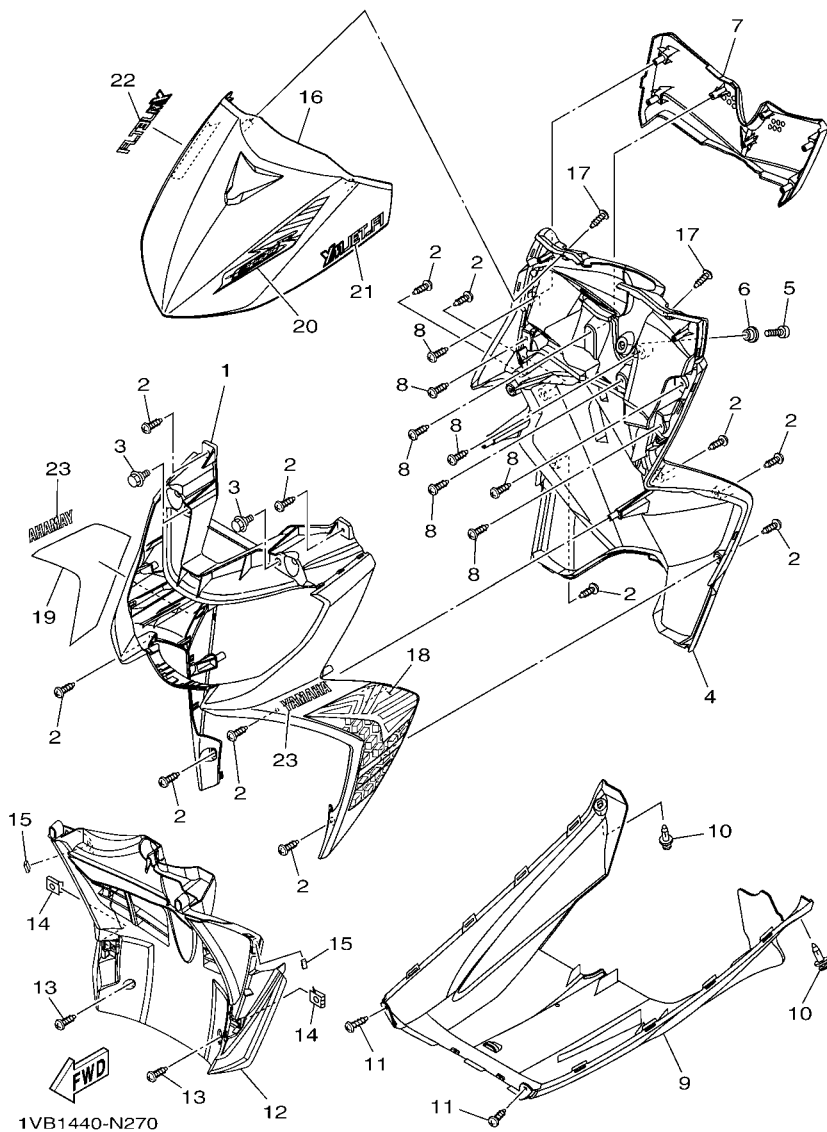


FIG. 27 LEG SHIELD

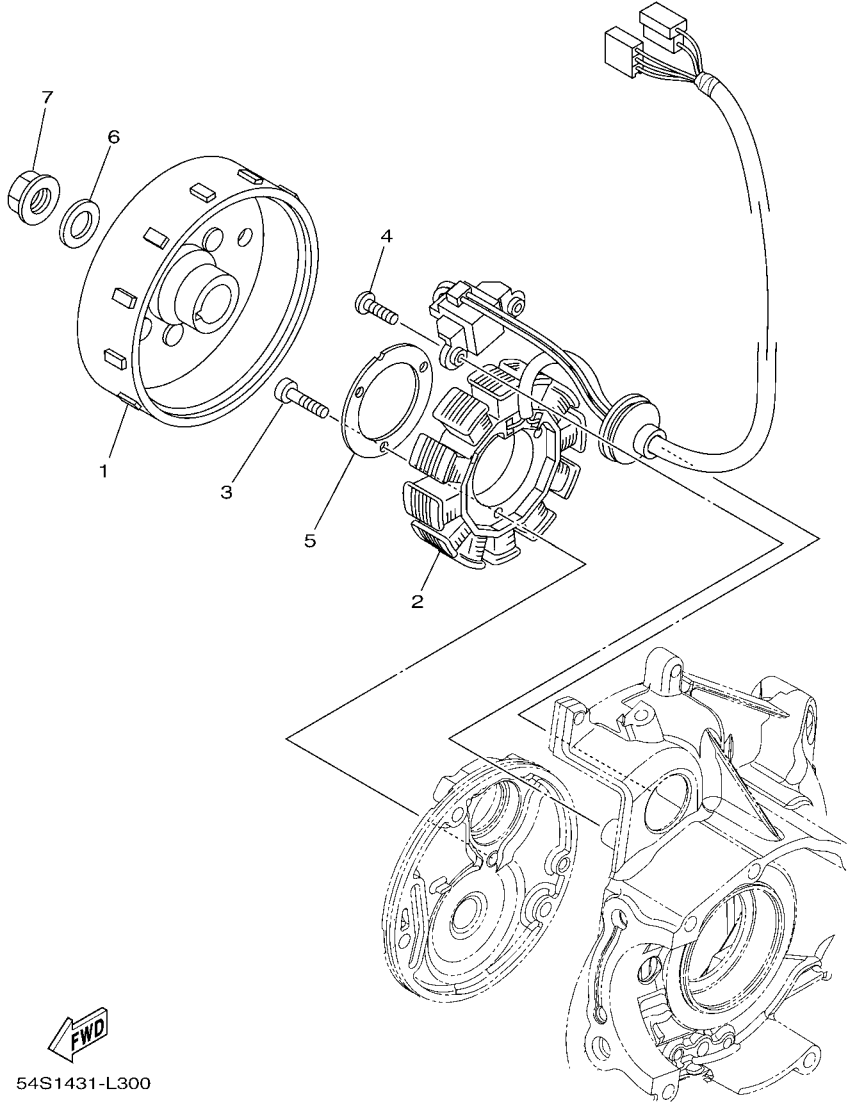
REF. NO.	PART NO.	DESCRIPTION	1VB1			REMARKS
1	1VB-F8311-00-P0	LEG SHIELD 1	1			UR FOR BWC1
	1VB-F8311-00-P1	LEG SHIELD 1	1			UR FOR SMX
	1VB-F8311-00-P3	LEG SHIELD 1	1			UR FOR RM7
	1VB-F8311-00-P2	LEG SHIELD 1	1			UR FOR BMC
2	97707-50016	SCREW, TRUSS HEAD TAPPING	12			
3	90109-06202	BOLT	2			
4	1VB-F8312-00	LEG SHIELD 2	1			
5	98907-06012	SCREW, BIND	1			
6	90387-07811	COLLAR	1			
7	1VB-F836K-00	PANEL, INNER 1	1			
8	97707-50016	SCREW, TRUSS HEAD TAPPING	7			
9	1VB-F8385-00	COVER, UNDER	1			
10	90269-06812	RIVET	2			
11	97707-50016	SCREW, TRUSS HEAD TAPPING	2			
12	1VB-F1552-00	FENDER, INNER	1			
13	97707-50016	SCREW, TRUSS HEAD TAPPING	2			
14	90183-05807	NUT, SPRING	2			
15	90520-04809	DAMPER, PLATE	2			
16	1VB-F3391-00-P0	PANEL, FRONT	1			DBNM8 EXCEPT RM7
	1VB-F3391-00-P1	PANEL, FRONT	1			BWC1 FOR RM7
17	97707-50016	SCREW, TRUSS HEAD TAPPING	2			
18	1VB-F8391-00	GRAPHIC 1	1			UR FOR BWC1
	1VB-F8391-10	GRAPHIC 1	1			UR FOR SMX
	1VB-F8391-20	GRAPHIC 1	1			UR FOR RM7
	1VB-F8391-30	GRAPHIC 1	1			UR FOR BMC
19	1VB-F8392-00	GRAPHIC 2	1			UR FOR BWC1
	1VB-F8392-10	GRAPHIC 2	1			UR FOR SMX

FIG. 27 LEG SHIELD



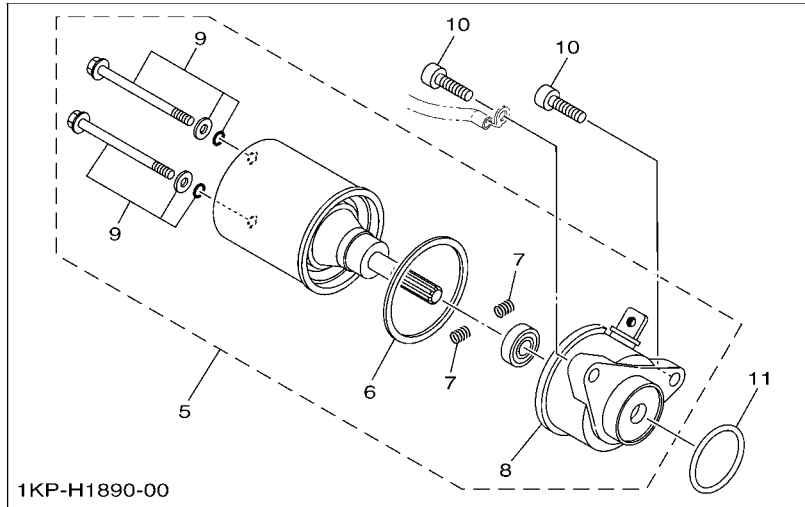
REF. NO.	PART NO.	DESCRIPTION	1VB1			REMARKS
19	1VB-F8392-20	GRAPHIC 2	1			UR FOR RM7
	1VB-F8392-30	GRAPHIC 2	1			UR FOR BMC
20	1VB-F8394-00	GRAPHIC 4	1			UR FOR BWC1
	1VB-F8394-10	GRAPHIC 4	1			UR FOR SMX
	1VB-F8394-20	GRAPHIC 4	1			UR FOR RM7
	1VB-F8394-30	GRAPHIC 4	1			UR FOR BMC
21	1VB-F8398-00	GRAPHIC 5	1			UR FOR BWC1
	1VB-F8398-10	GRAPHIC 5	1			UR FOR SMX
	1VB-F8398-20	GRAPHIC 5	1			UR FOR RM7
	1VB-F8398-30	GRAPHIC 5	1			UR FOR BMC
22	1VB-F8399-00	GRAPHIC 6	1			UR FOR BWC1
	1VB-F8399-10	GRAPHIC 6	1			UR FOR SMX
	1VB-F8399-20	GRAPHIC 6	1			UR FOR RM7
	1VB-F8399-30	GRAPHIC 6	1			UR FOR BMC
23	99237-00080	EMBLEM, YAMAHA	2			FOR BWC1
	99231-00080	EMBLEM, YAMAHA	2			EXCEPT FOR BWC1

FIG. 28 GENERATOR

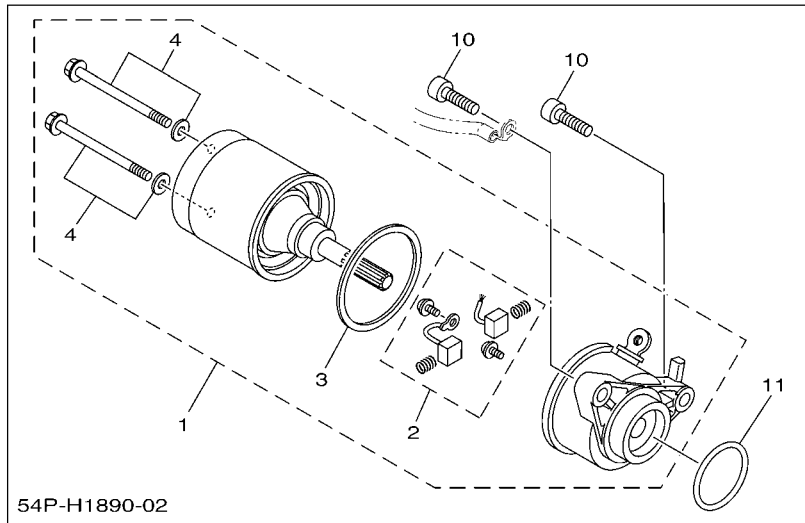


54S1431-L300

REF. NO.	PART NO.	DESCRIPTION	TVBT				REMARKS
1	54P-H1450-00	ROTOR ASSY	1				
2	54P-H1410-01	STATOR ASSY	1				
3	91312-06020	BOLT	3				
4	98502-06016	SCREW, PAN HEAD	2				
5	54P-H132G-00	PLATE	1				
6	90201-12688	WASHER, PLATE	1				
7	90179-12004	NUT	1				



1KP-H1890-00



54P-H1890-02

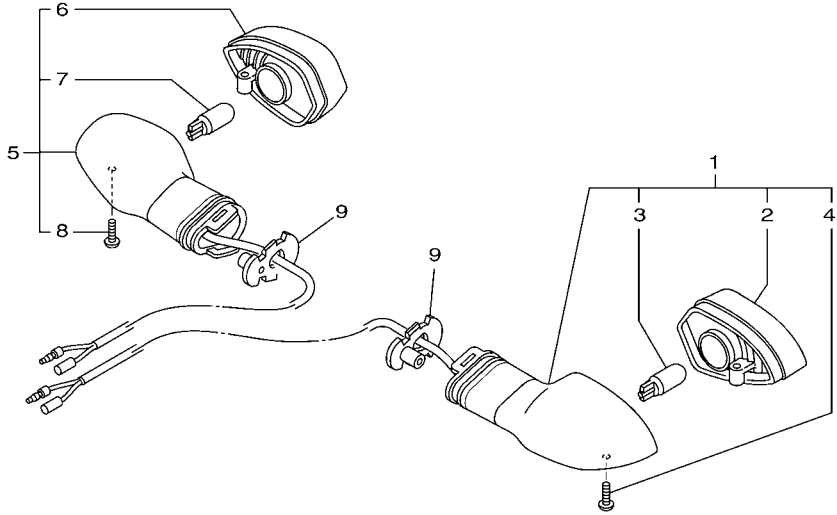


1VB1440-N290

FIG. 29 STARTING MOTOR

REF. NO.	PART NO.	DESCRIPTION	1VBI				REMARKS
1	54P-H1890-02	MOTOR ASSY	1				UR
2	5TP-H1801-00	.BRUSH SET	1				
3	5D9-H1861-00	.GASKET	1				
4	5D9-H1828-00	.SCREW 2	1				
5	1KP-H1890-00	MOTOR ASSY	1				UR
6	1KP-H1847-00	.O-RING	1				
7	1KP-H1617-00	.SPRING, BRUSH	2				
8	1KP-H1830-00	.FRONT BRACKET ASSY	1				
9	1KP-H1828-00	.SCREW 2	2				
10	91312-06020	BOLT	2				
11	93210-29803	O-RING	1				

FIG. 30 FLASHER LIGHT




1VB1440-N300

REF. NO.	PART NO.	DESCRIPTION	1VB1				REMARKS
1	1VP-H3330-00	REAR FLASHER LIGHT ASSY 1	1				
2	1VP-H333A-00	.LENS COMP 1	1				
3	1VP-H3311-00	.BULB (12V-10W)	1				
4	1VP-H3333-00	.SCREW, LENS FITTING	1				
5	1VP-H3340-00	REAR FLASHER LIGHT ASSY 2	1				
6	1VP-H334A-00	.LENS COMP 2	1				
7	1VP-H3311-00	.BULB (12V-10W)	1				
8	1VP-H3333-00	.SCREW, LENS FITTING	1				
9	1VP-H3318-00	STAY, FLASHER 1	2				

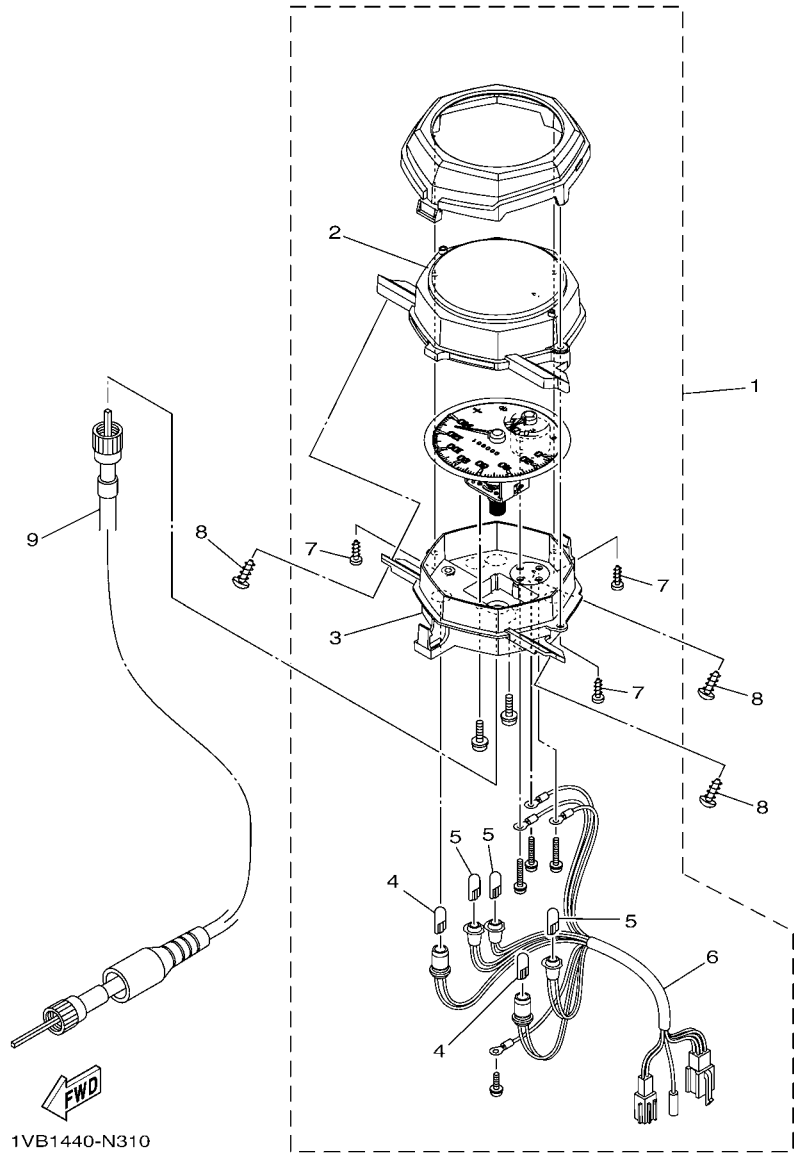
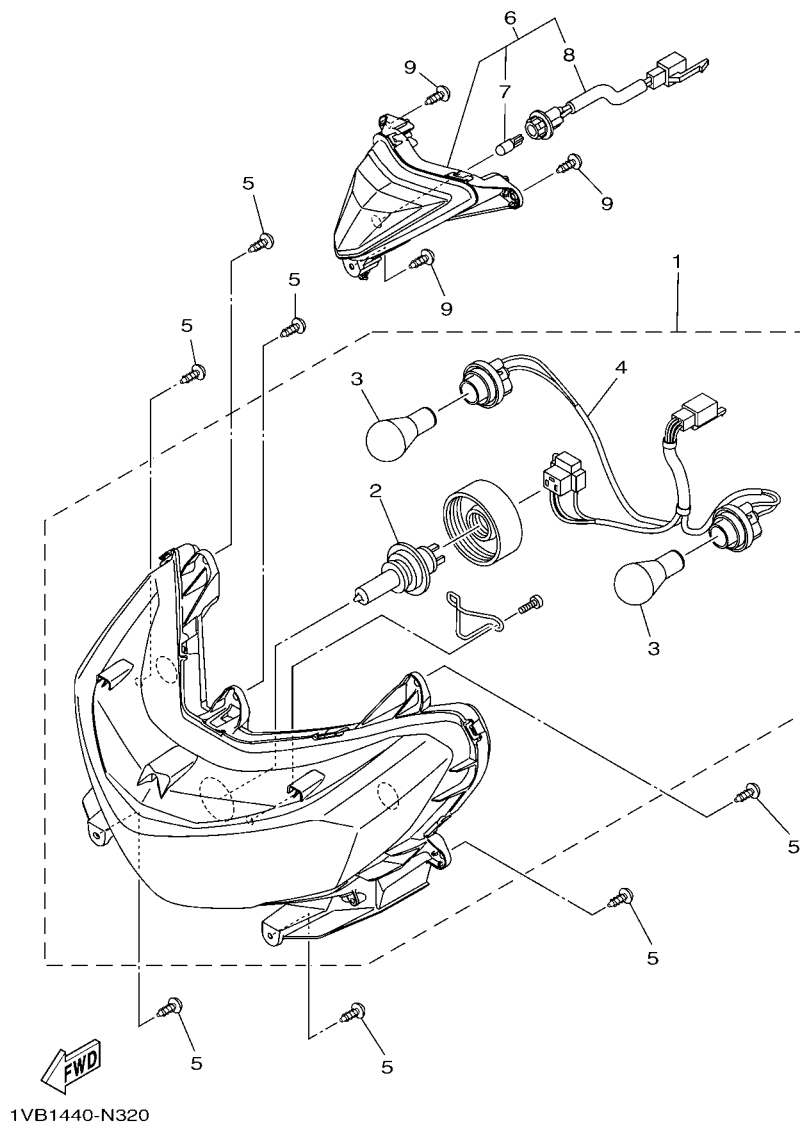


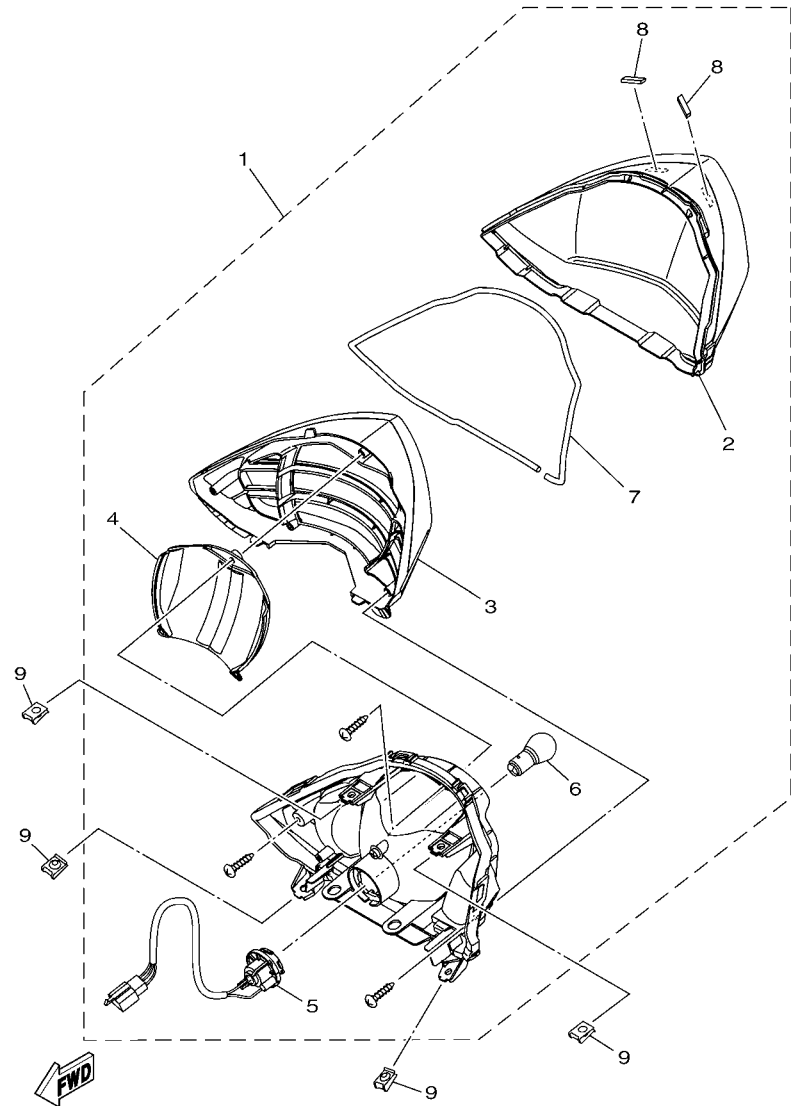
FIG. 31 METER

REF. NO.	PART NO.	DESCRIPTION	1VB1				REMARKS
1	1VB-H3510-00	SPEEDOMETER ASSY	1				
2	1VB-H3511-00	.LENS, SPEEDOMETER	1				
3	1VB-H353F-00	.CASE, METER LOWER	1				
4	1VB-H3518-00	.BULB, METER (T10 12V-3.4W)	2				
5	5BU-H3517-00	.BULB (T6.5 12V-1.7W)	3				
6	1VB-H3509-00	.SOCKET CORD ASSY	1				
7	97702-30012	.SCREW, TAPPING	3				
8	97707-50016	SCREW, TRUSS HEAD TAPPING	3				
9	1VB-H3550-00	SPEEDOMETER CABLE ASSY	1				

FIG. 32 HEADLIGHT



REF. NO.	PART NO.	DESCRIPTION	1VB1				REMARKS
1	1VB-H4300-00	HEADLIGHT ASSY	1				
2	5B9-H4314-10	.BULB, HEADLIGHT (12V 35/35W)	1				
3	1VB-H3311-00	.BULB (12V-21W)	2				
4	1VB-H4312-00	.CORD ASSY	1				
5	97707-50016	SCREW, TRUSS HEAD TAPPING	7				
6	1VB-H4301-00	PILOT LIGHT ASSY 1	1				
7	31B-H5353-00	.BULB (12V-5W)	1				
8	1GS-H339V-00	.CORD ASSY	1				
9	97707-50012	SCREW, TRUSS HEAD TAPPING	3				



1VB1440-N330

FIG. 33 TAILLIGHT

REF. NO.	PART NO.	DESCRIPTION	1VB1				REMARKS
1	1VB-H4710-00	TAILLIGHT UNIT ASSY	1				
2	1VB-H4733-00	.LENS, 1	1				
3	1VB-H4716-00	.COVER, TAILLIGHT	1				
4	1VB-H4721-00	.LENS, TAILLIGHT	1				
5	1VB-H4735-00	.SOCKET CORD ASSY	1				
6	1VB-H4714-00	.BULB, TAILLIGHT (12V-21/5W)	1				
7	1VB-H4723-00	.GASKET, TAIL LENS	1				
8	1VB-F8371-00	.DAMPER	2				
9	90183-05807	NUT, SPRING	4				

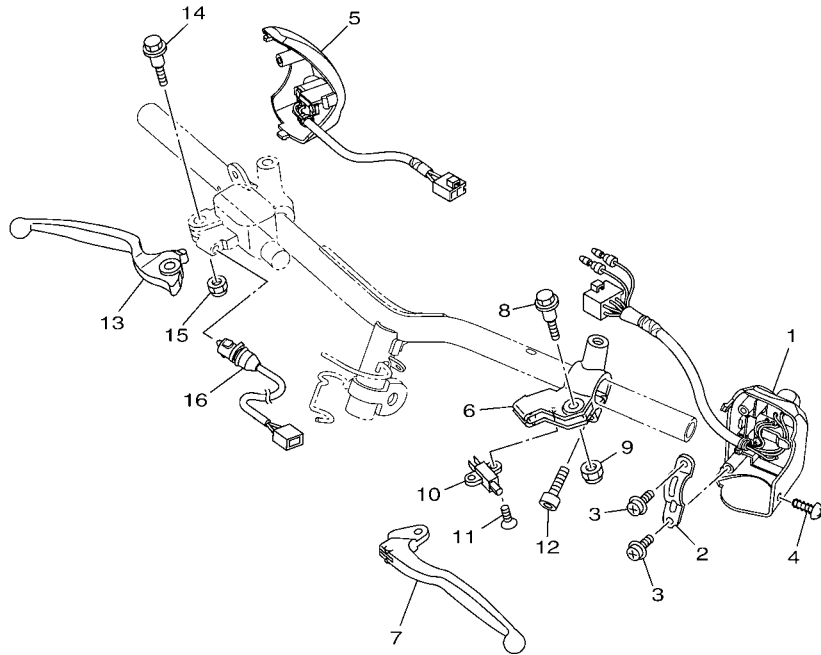


FIG. 34 HANDLE SWITCH & LEVER

REF. NO.	PART NO.	DESCRIPTION	TVBI				REMARKS
1	1KP-H3973-00	SWITCH, HANDLE 3	1				
2	1S8-H3955-01	BRACKET 1	1				
3	97602-05216	SCREW, PAN HEAD WITH WASHER	2				
4	97707-50016	SCREW, TRUSS HEAD TAPPING	1				
5	1KP-H3976-00	SWITCH, HANDLE 1	1				
6	5TL-H2911-20	HOLDER, LEVER 1	1				
7	5TL-H3912-20	LEVER 1	1				
8	90109-06814	BOLT	1				
9	95602-06100	NUT, U	1				
10	5TL-H3980-10	FRONT STOP SWITCH ASSY	1				
11	9870M-03008	SCREW, FLAT HEAD	1				
12	91312-06020	BOLT	1				
13	5TL-H3922-00	LEVER 2	1				
14	90109-06255	BOLT	1				
15	95602-06100	NUT, U	1				
16	54P-H3980-00	FRONT STOP SWITCH ASSY	1				


1KP1460-L330

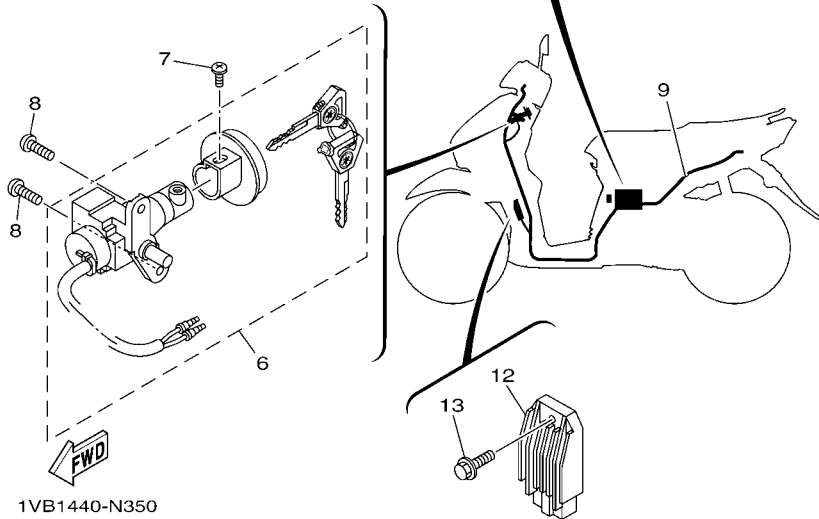
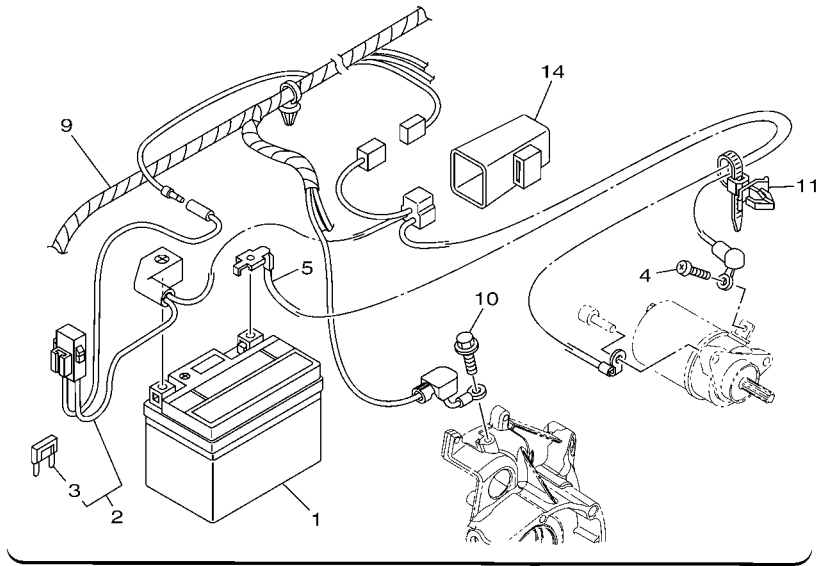


FIG. 35 ELECTRICAL 1

REF. NO.	PART NO.	DESCRIPTION	1VB1				REMARKS
1	2CB-H2100-00	BATTERY ASSY	1				
2	1VB-H2115-00	WIRE, PLUS LEAD	1				
3	1VP-H2151-00	.FUSE (15A)	1				
4	98902-05008	SCREW, BIND	1				
5	54P-H2116-00	WIRE, MINUS LEAD	1				
6	1VB-XH250-00	MAIN SW. STRG. LOCK SUB ASSY	1				
7	97602-05208	SCREW, PAN HEAD WITH WASHER	1				
8	90149-06309	SCREW	2				
9	1VB-H2590-00	WIRE HARNESS ASSY	1				
10	95022-06012	BOLT, FLANGE	1				
11	90464-12089	CLAMP	1				
12	1GS-H1960-00	RECTIFIER & REGULATOR ASSY	1				
13	90105-068A0	BOLT, FLANGE	1				
14	5TP-H1940-00	STARTER RELAY ASSY	1				

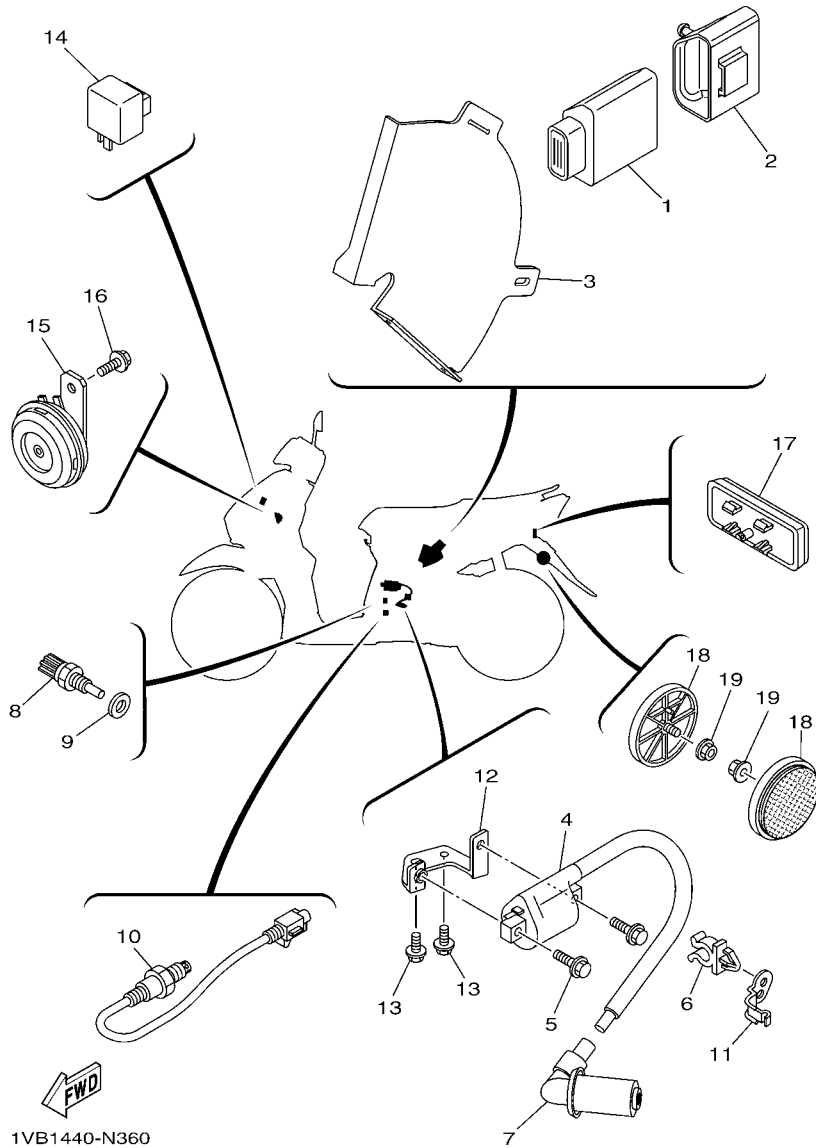


FIG. 36 ELECTRICAL 2

REF. NO.	PART NO.	DESCRIPTION	TVBI				REMARKS
1	54P-H591A-10	ENGINE CONTROL UNIT ASSY	1				
2	54P-H5546-00	BAND	1				
3	1KP-H2599-00	COVER, CONNECTER	1				
4	54P-H2310-10	IGNITION COIL ASSY	1				
5	95022-06020	BOLT, FLANGE	2				
6	90464-14808	CLAMP	1				
7	54P-H2370-00	PLUG CAP ASSY	1				
8	54P-H3591-00	THERMO UNIT	1				
9	90430-10804	GASKET	1				
10	54P-H592A-01	SENSOR, OXYGEN	1				
11	54P-H1328-00	CLAMP	1				
12	1VB-H2316-00	BRACKET, IGNITION COIL	1				
13	95022-06010	BOLT, FLANGE	2				
14	5TL-H3350-00	FLASHER RELAY ASSY	1				
15	54P-H3371-00	HORN	1				
16	95802-06010	BOLT, FLANGE	1				
17	54P-H5130-00	REAR REFLECTOR ASSY	1				
18	1CJ-H5111-00	REFLECTOR, FRONT 1	2				
19	95702-06500	NUT, FLANGE	2				

NUMERICAL INDEX

PART NO.	REF. NO.	PART NO.	REF. NO.	PART NO.	REF. NO.	PART NO.	REF. NO.	PART NO.	REF. NO.	PART NO.	REF. NO.
5LW-15659-01	10 - 6	5TL-E2118-00	3 - 5	54P-E3907-11	19 - 6	54P-E5495-00	10 - 21	54P-F1410-00	14 - 4	1VB-F174J-10	16 - 38
22F-23411-01	18 - 26	54P-E2119-00	3 - 3	54P-E3915-00	19 - 7	54P-E5512-00	11 - 6	54P-F1459-00	14 - 11	1VB-F174J-20	16 - 38
156-23412-00	18 - 23	54P-E2121-00	3 - 2	54P-E3938-00	7 - 12	44D-E5521-00	11 - 7	1VB-F1511-00-P0	15 - 1	1VB-F174J-30	16 - 38
22F-23412-01	18 - 25	1DY-E2126-00	3 - 7	54P-E3971-00	19 - 3	54P-E5524-01	11 - 1	1VB-F1511-00-P1	15 - 1	1VB-F174K-00	16 - 39
5TL-2341E-00	18 - 24	5PO-E2126-00	3 - 7	54P-E4137-00	7 - 13	18S-E5570-00	11 - 4	1VB-F1511-00-P2	15 - 1	1VB-F174K-10	16 - 39
5TL-2341E-10	18 - 27	54P-E2146-00	3 - 12	54P-E4146-00	7 - 23	1KP-E5570-00	11 - 4	1VB-F1511-00-P3	15 - 1	1VB-F174K-20	16 - 39
36Y-2589H-00	25 - 8	54P-E2151-00	3 - 8	54P-E4147-00	7 - 10	54P-E5570-00	11 - 4	1VB-F1552-00	27 - 12	1VB-F174K-30	16 - 39
54P-E1102-00	1 - 1	54P-E2151-10	3 - 8	5CA-E4147-00	7 - 11	1GC-E5598-00	11 - 5	1VB-F1611-00	15 - 3	1VB-F175C-00	16 - 40
54P-E111F-00	4 - 3	33S-E2159-00	3 - 10	5P2-E417E-00	7 - 37	44D-E5598-00	11 - 5	1VB-F1621-00	15 - 5	3XL-F178A-00	7 - 38
54P-E111J-00	1 - 7	54P-E2170-00	4 - 1	54S-E4411-00	7 - 24	5TL-E5601-10	11 - 8	1VB-F1711-00-P0	16 - 13	54P-F2141-00	14 - 13
54P-E1133-10	1 - 2	44D-E2176-00	4 - 5	54S-E4412-00	7 - 25	1KP-E5620-00	11 - 14	1VB-F1711-00-P1	16 - 13	10C-F2210-20	17 - 1
54P-E1165-00	1 - 9	5MX-E2210-10	4 - 11	54S-E442F-00	7 - 44	4VP-E5630-00	11 - 16	1VB-F1711-00-P2	16 - 13	5MX-F2216-00	9 - 5
54P-E1166-00	7 - 41	54P-E2213-00	4 - 12	54S-E4437-00	7 - 26	54P-E5630-00	11 - 16	1VB-F1711-00-P3	16 - 13	1VB-F3100-00	18 - 1
54P-E1169-00	1 - 10	54P-E2228-00	4 - 14	4ST-E443E-00	10 - 4	5MX-E5657-00	12 - 30	1VB-F171E-00-P0	16 - 30	5VW-F3110-00	18 - 8
1LB-E1173-00	1 - 13	54P-E2231-00	4 - 7	5VV-E443E-00	7 - 33	5MX-E5673-00	11 - 17	1VB-F171E-00-P1	16 - 30	5VW-F3111-00	18 - 19
54P-E1173-00	1 - 13	44D-E2233-00	4 - 8	5TN-E443G-00	7 - 30	44D-E5744-00	12 - 23	1VB-F171E-00-P2	16 - 30	1VB-F3126-00	18 - 5
54P-E1181-00	1 - 17	54P-E2241-00	4 - 10	54S-E4450-00	7 - 27	54P-E6111-00	12 - 1	1VB-F171E-00-P3	16 - 30	1VB-F3136-00	18 - 2
54P-E1191-00	1 - 8	54P-E2611-00	6 - 13	54S-E4452-00	7 - 29	54P-E6611-00	12 - 25	1VB-F171L-00-P0	16 - 5	1VB-F3141-00	18 - 15
54P-E1193-00	1 - 14	54P-E262H-00	6 - 4	54S-E4453-00	7 - 28	54P-E6620-00	12 - 13	1VB-F171L-00-P1	16 - 5	5LL-F3144-00	18 - 14
4YS-E1198-00	9 - 15	54P-E2651-00	6 - 1	1VB-E4610-00	8 - 1	54P-E7155-00	13 - 8	1VB-F171M-00-P0	16 - 9	4UV-F3145-00	18 - 3
54P-E1311-00	1 - 21	54P-E2652-00	6 - 3	10C-E4613-00	8 - 5	54P-E7211-00	13 - 5	1VB-F171M-00-P1	16 - 9		18 - 6
54P-E1311-10	1 - 21	54P-E2658-00	6 - 2	1VB-E4718-00	8 - 2	54P-E7410-00	13 - 1	1VB-F1721-00-P0	16 - 18	2JG-F3147-00	18 - 20
54P-E1351-00	1 - 22	54P-E2659-00	6 - 9	54P-E5113-00	9 - 20	54P-E7421-00	13 - 4	1VB-F1721-00-P1	16 - 18	31D-F3152-00	18 - 11
1KP-E1400-00	2 - 1	44D-E2662-00	3 - 11	54P-E5150-00	9 - 1	54P-E7465-00	12 - 16	1VB-F1721-00-P2	16 - 18	5PO-F3156-00	18 - 4
54P-E1400-00	2 - 1	54P-E2668-00	6 - 10	54P-E5150-10	9 - 1	54P-E7465-10	12 - 17	1VB-F1721-00-P3	16 - 18		18 - 7
1KP-E1400-10	2 - 1	54P-E2684-00	6 - 5	54P-E5191-00	10 - 7	54P-E7471-00	12 - 2	1VB-F172W-00	16 - 1	2JG-F3157-00	18 - 10
54P-E1400-10	2 - 1	1GC-E3300-00	5 - 1	54P-E5316-00	10 - 11	54P-E7611-00	12 - 12	1VB-F1731-00-7B	16 - 24	509-F3158-L0	18 - 12
1KP-E1400-20	2 - 1	1KP-E3300-00	5 - 1	54P-E5351-00	5 - 4	54P-E7620-00	12 - 7	1VB-F1731-00-P0	16 - 24	4D0-F3165-00	18 - 22
54P-E1400-20	2 - 1	28D-E3300-10	5 - 1	54P-E5362-00	9 - 21	54P-E7623-00	12 - 9	1VB-F1735-00	14 - 3	1VB-F3170-00	18 - 9
1KP-E1400-30	2 - 1	5TL-E3324-00	2 - 8	5LW-E5363-00	9 - 18	54P-E7632-00	12 - 8	1VB-F173E-00	16 - 34	31B-F3181-00	18 - 13
54P-E1400-30	2 - 1	54P-E3411-00	5 - 5	54P-E5371-00	9 - 7	54P-E7641-00	12 - 26	1VB-F173E-10	16 - 34	4D0-F3340-00	18 - 16
54P-E1400-40	2 - 1	5LW-E3452-00	2 - 6		10 - 3	1GC-E7645-00	12 - 27	1VB-F173E-20	16 - 34	4D0-F3346-00	18 - 18
54P-E1400-50	2 - 1	54P-E3474-00	7 - 16	54P-E5373-00	9 - 8	44D-E7645-00	12 - 27	1VB-F173E-30	16 - 34	1VB-F334G-00	18 - 21
1KP-E1422-00	2 - 5	5LW-E3475-00	5 - 2	54P-E5383-00	10 - 9	54P-E7649-00	12 - 33	1VB-F173F-00	16 - 35	1VB-F3391-00-P0	27 - 16
54P-E1422-00	2 - 5	54P-E3556-10	7 - 3	54P-E5407-00	10 - 22	54P-E7649-10	12 - 33	1VB-F173F-10	16 - 35	1VB-F3391-00-P1	27 - 16
54P-E1422-10	2 - 5	54P-E3557-00	7 - 14	14D-E5408-00	9 - 9	54P-E7653-00	12 - 10	1VB-F173F-20	16 - 35	156-F3411-00	18 - 17
54P-E1445-00	2 - 14	5LW-E3569-00	6 - 16	54P-E5408-00	10 - 17	54P-E7660-00	12 - 14	1VB-F173F-30	16 - 35	5TL-F3416-00	18 - 28
54P-E1445-10	2 - 14	54P-E3575-00	7 - 39	54P-E5411-00	10 - 1	5TL-E7664-00	12 - 18	1VB-F1741-00-7B	16 - 27	1VB-F4110-00	19 - 1
54P-E1603-00	2 - 13	1VB-E3585-00	7 - 1	54P-E5413-00	10 - 25	44D-E7668-00	12 - 21	1VB-F1741-00-P0	16 - 27	1VB-F414A-00	19 - 11
1KP-E1631-00	2 - 10	54P-E3593-00	7 - 5	54P-E5417-00	9 - 23	54P-E7670-00	12 - 15	1VB-F174G-00	16 - 36	54P-F414G-00	19 - 8
54P-E1631-00	2 - 10	54P-E3595-00	7 - 2	54P-E5421-00	9 - 36	54P-E7674-00	12 - 11	1VB-F174G-10	16 - 36	1VB-F419F-00	19 - 4
54P-E1633-10	2 - 11	54P-E3750-10	7 - 17	54P-E5423-00	9 - 30	54P-E7678-00	12 - 22	1VB-F174G-20	16 - 36	54P-F4491-00	19 - 9
5D9-E1651-00	2 - 4	54P-E3761-10	7 - 9	54P-E5451-00	10 - 2	54P-E7678-10	12 - 24	1VB-F174G-30	16 - 36	4YY-F4610-00	19 - 12
5MX-E1681-10	2 - 2	5LW-E3769-00	9 - 22	54P-E5453-00	9 - 26	54P-E7683-00	12 - 19	1VB-F174H-00	16 - 37	4YY-F4612-00	19 - 13
54P-E2111-00	3 - 1	54P-E3770-10	7 - 8	54P-E5461-00	9 - 37	54P-E7684-00	12 - 20	1VB-F174H-10	16 - 37	1VB-F4704-00	20 - 5
54P-E2113-00	3 - 4	54P-E3815-00	7 - 20	54P-E5471-00	10 - 18	1VB-F1110-00	14 - 1	1VB-F174H-20	16 - 37	1VB-F470F-00	20 - 2
1KP-E2117-00	3 - 6	54P-E3892-00	7 - 18	54P-E5472-00	10 - 20	1VB-F1161-00	18 - 34	1VB-F174H-30	16 - 37	1VB-F4726-00	20 - 11
54P-E2117-00	3 - 6	54P-E3895-00	7 - 19	54P-E5473-00	10 - 16	1VB-F1268-00	14 - 2	1VB-F174J-00	16 - 38	5VW-F4727-00	20 - 10

NUMERICAL INDEX

PART NO.	REF. NO.	PART NO.	REF. NO.	PART NO.	REF. NO.	PART NO.	REF. NO.	PART NO.	REF. NO.	PART NO.	REF. NO.
1VB-F4730-00	20 - 1	1VB-F6301-00	24 - 16	1VB-F8399-30	27 - 22	54P-H3591-00	36 - 8	90119-06044	26 - 10	90340-12808	9 - 14
1VB-F4741-00	20 - 3	1VB-F6351-00	24 - 19	54P-H1328-00	36 - 11	5TL-H3912-20	34 - 7	90149-05801	1 - 11	90380-15811	11 - 10
44P-F4741-00	20 - 4	1VB-F637G-00	24 - 20	54P-H132G-00	28 - 5	5TL-H3922-00	34 - 13	90149-06309	35 - 8	90387-05820	16 - 14
1S8-F4768-00	20 - 15	1VB-F7111-00	26 - 1	54P-H1410-01	28 - 2	1S8-H3955-01	34 - 2	90151-06811	10 - 10		16 - 20
1VB-F476U-00	20 - 25	54P-F7112-00	26 - 2	54P-H1450-00	28 - 1	1KP-H3973-00	34 - 1	90159-06810	16 - 31	90387-064W3	7 - 35
1VB-F4773-00-P0	20 - 19	1VB-F7114-00	24 - 21	1KP-H1617-00	29 - 7	1KP-H3976-00	34 - 5	90163-05803	7 - 32	90387-067V1	6 - 7
5P0-F4780-01	20 - 13	5P2-F7114-00	14 - 7	5TP-H1801-00	29 - 2	54P-H3980-00	34 - 16	90170-05803	3 - 9	90387-06891	7 - 34
1VB-F478E-00	20 - 16	54P-F7121-00	9 - 4	1KP-H1828-00	29 - 9	5TL-H3980-10	34 - 10	90170-12800	12 - 32	90387-07811	27 - 6
1VB-F5168-00-33	21 - 1	5VW-F7214-00	26 - 17	5D9-H1828-00	29 - 4	1VB-H4300-00	32 - 1	90179-06411	24 - 25	90387-08820	26 - 14
3NA-F5181-01	21 - 8	5LW-F7254-00	26 - 5	1KP-H1830-00	29 - 8	1VB-H4301-00	32 - 6	90179-08518	1 - 15	90387-08821	14 - 8
5VW-F5190-01	21 - 11	1VB-F7267-00	26 - 6	1KP-H1847-00	29 - 6	1VB-H4312-00	32 - 4	90179-10803	12 - 35	90387-10837	21 - 7
5LW-F530K-00	23 - 7	1VB-F7311-00	26 - 12	5D9-H1861-00	29 - 3	5B9-H4314-10	32 - 2	90179-12004	28 - 7	90388-10800	14 - 12
54P-F5326-00	23 - 4	1VB-F7430-00	26 - 18	1KP-H1890-00	29 - 5	1VB-H4710-00	33 - 1	90179-25802	18 - 29	90388-10805	9 - 6
5VW-F5338-01-33	23 - 1	1VB-F7431-00	26 - 19	54P-H1890-02	29 - 1	1VB-H4714-00	33 - 6	90183-05807	16 - 8	90401-10159	25 - 2
5LW-F533A-00	23 - 12	1VB-F7432-00	26 - 20	5TP-H1940-00	35 - 14	1VB-H4716-00	33 - 3		16 - 12	90430-06014	1 - 5
10C-F5351-00	23 - 10	1VB-F7440-00	26 - 26	1GS-H1960-00	35 - 12	1VB-H4721-00	33 - 4		16 - 17	90430-08119	9 - 3
10C-F5355-00	23 - 11	1VB-F7441-00	26 - 27	2CB-H2100-00	35 - 1	1VB-H4723-00	33 - 7		16 - 23		9 - 17
5P0-F5802-00	22 - 4	1VB-F7442-00	26 - 28	1VB-H2115-00	35 - 2	1VB-H4733-00	33 - 2		16 - 26	90430-10804	36 - 9
5YP-F5803-50	22 - 5	1VB-F7481-00	26 - 7	54P-H2116-00	35 - 5	1VB-H4735-00	33 - 5		16 - 29	90464-12089	35 - 11
3C1-F5805-10	22 - 9	1VB-F8100-00	20 - 26	1VB-H2129-00	20 - 8	1CJ-H5111-00	36 - 18		20 - 7	90464-14808	36 - 6
44S-F580U-01	22 - 3	1VB-F8311-00-P0	27 - 1	1VP-H2151-00	35 - 3	54P-H5130-00	36 - 17		24 - 6	90467-110A3	10 - 5
5P0-F5827-00	22 - 14	1VB-F8311-00-P1	27 - 1	1VB-H2176-00	20 - 22	31B-H5353-00	32 - 7		24 - 9	90467-12807	7 - 31
5TL-F582U-10	22 - 1	1VB-F8311-00-P2	27 - 1	54P-H2310-10	36 - 4	54P-H5546-00	36 - 2		26 - 9	90467-13858	7 - 42
5P0-F583T-03	25 - 4	1VB-F8311-00-P3	27 - 1	1VB-H2316-00	36 - 12	54P-H591A-10	36 - 1		27 - 14		7 - 43
5P0-F5852-00	25 - 7	1VB-F8312-00	27 - 4	54P-H2370-00	36 - 7	54P-H592A-01	36 - 10		33 - 9	90467-15804	7 - 21
5P0-F5854-00	25 - 6	1VB-F8356-00	14 - 15	1VB-H2590-00	35 - 9	5P0-W0041-00	25 - 5	90185-10011	24 - 3		7 - 22
5P0-F5855-00	25 - 10	1VB-F836K-00	27 - 7	1KP-H2599-00	36 - 3	4C9-W0048-00	22 - 8	90185-10811	21 - 9	90480-13013	7 - 36
5TL-F5867-01	25 - 9	1VB-F8371-00	33 - 8	5TL-H2911-20	34 - 6	1VB-XH250-00	35 - 6	90185-14081	23 - 15	90501-12743	26 - 21
1KP-F5872-00	25 - 1	1VB-F8385-00	27 - 9	1VB-H3311-00	32 - 3	90101-06046	23 - 14	90201-05817	8 - 4		26 - 29
1VB-F5875-00	18 - 30	1VB-F8391-00	27 - 18	1VP-H3311-00	30 - 3	90101-08847	26 - 13	90201-10065	17 - 5	90501-16003	24 - 24
1VB-F5876-00	18 - 32	1VB-F8391-10	27 - 18		30 - 7	90105-068A0	35 - 13	90201-10118	25 - 3	90501-16004	5 - 6
5YP-F5917-00	22 - 6	1VB-F8391-20	27 - 18	1VP-H3318-00	30 - 9	90105-08861	17 - 2	90201-10831	21 - 10	90506-12001	23 - 8
5P0-F5919-00	22 - 11	1VB-F8391-30	27 - 18	1VP-H3330-00	30 - 1	90105-088E1	4 - 4	90201-12028	17 - 4	90506-15001	23 - 9
5YP-F5924-00	22 - 12	1VB-F8392-00	27 - 19	1VP-H3333-00	30 - 4	90105-088E3	14 - 9	90201-12688	28 - 6	90506-20514	26 - 16
5YP-F5925-01	22 - 10	1VB-F8392-10	27 - 19		30 - 8	90105-10283	14 - 5	90201-14820	23 - 16	90506-35821	26 - 4
5YP-F5937-00	22 - 7	1VB-F8392-20	27 - 19	1VP-H333A-00	30 - 2	90105-10831	22 - 15	90201-154E8	11 - 11	90508-32768	11 - 9
5YP-F5939-00	22 - 13	1VB-F8392-30	27 - 19	1VP-H3340-00	30 - 5	90105-10896	24 - 2	90201-15841	12 - 29	90520-02813	24 - 4
1VB-F6110-00	24 - 1	1VB-F8394-00	27 - 20	1VP-H334A-00	30 - 6	90109-06202	15 - 2	90201-20276	23 - 17	90520-02819	16 - 3
1VB-F6143-00-P0	24 - 5	1VB-F8394-10	27 - 20	5TL-H3350-00	36 - 14		15 - 4	90206-14093	23 - 13		16 - 6
1VB-F6143-00-P1	24 - 5	1VB-F8394-20	27 - 20	54P-H3371-00	36 - 15		20 - 6	90208-12808	12 - 31		16 - 33
1VB-F6145-00	24 - 8	1VB-F8394-30	27 - 20	1GS-H339V-00	32 - 8		27 - 3	90249-12008	24 - 26	90520-02825	16 - 32
44P-F6240-00	24 - 11	1VB-F8398-00	27 - 21	1VB-H3509-00	31 - 6	90109-06255	34 - 14	90252-23800	26 - 24	90520-03806	20 - 21
44P-F6241-00	24 - 12	1VB-F8398-10	27 - 21	1VB-H3510-00	31 - 1	90109-06814	34 - 8		26 - 32	90520-03808	20 - 24
1VB-F6246-00	24 - 13	1VB-F8398-20	27 - 21	1VB-H3511-00	31 - 2	90110-06868	1 - 20	90269-06812	16 - 16	90520-03809	20 - 23
5LW-F6280-10	24 - 14	1VB-F8398-30	27 - 21	5BU-H3517-00	31 - 5	90111-06811	8 - 3		16 - 22	90520-04809	27 - 15
5P2-F6281-00	24 - 27	1VB-F8399-00	27 - 22	1VB-H3518-00	31 - 4	90111-08853	22 - 2		26 - 11	90520-05810	6 - 8
5P2-F6282-00	24 - 28	1VB-F8399-10	27 - 22	1VB-H353F-00	31 - 3	90116-08843	9 - 13		27 - 10	90520-05812	16 - 19
5LW-F6290-10	24 - 15	1VB-F8399-20	27 - 22	1VB-H3550-00	31 - 9	90119-06044	19 - 2	90280-03017	2 - 9	90520-08802	26 - 8

NUMERICAL INDEX

PART NO.	REF. NO.	PART NO.	REF. NO.	PART NO.	REF. NO.	PART NO.	REF. NO.	PART NO.	REF. NO.	PART NO.	REF. NO.
90520-08804	16 - 2	93306-253Y9	12 - 5	95602-10200	14 - 6	97707-50016	32 - 5				
	16 - 10	93306-300X8	21 - 4		14 - 14		34 - 4				
90520-10811	10 - 19	93306-301XT	13 - 2	95612-08618	1 - 6	97707-50020	6 - 6				
90520-15806	10 - 26		13 - 3	95702-06500	20 - 12	98502-05020	5 - 3				
90560-10292	21 - 2	93306-372X2	2 - 7		36 - 19	98502-05025	24 - 29				
91312-05010	19 - 10	93306-372Y5	2 - 7	95702-08500	8 - 6	98502-06016	28 - 4				
91312-06010	12 - 3	93306-804Y3	11 - 2	95702-10500	23 - 5	98507-05010	20 - 18				
91312-06012	4 - 9	93306-804Y4	11 - 2	95802-06010	14 - 16	9870M-03008	34 - 11				
91312-06020	28 - 3	93306-804Y6	11 - 2		18 - 31	98902-05008	35 - 4				
	29 - 10	93310-528Y8	2 - 3		18 - 33	98907-06012	27 - 5				
	34 - 12	93440-10085	1 - 3		18 - 35	99002-08600	26 - 3				
91312-06025	11 - 15	93450-14088	2 - 12		20 - 17	99009-15400	11 - 12				
	25 - 11	93450-32837	11 - 3		36 - 16	99009-17400	12 - 4				
91701-08035	26 - 23	93501-04011	26 - 22	95802-08030	26 - 25	99231-00080	27 - 23				
	26 - 31		26 - 30		26 - 33	99237-00080	27 - 23				
91810-14809	1 - 18	93900-00817	21 - 6	95812-06025	7 - 15	99480-05010	9 - 27				
	1 - 19		23 - 3		7 - 40						
	9 - 10	94107-14807	21 - 5	95812-06030	1 - 12						
	9 - 33	94108-14809	23 - 2	95812-06035	7 - 6						
	9 - 38	94568-F9090	4 - 6	95812-06050	7 - 7						
	10 - 12	94700-00880	1 - 16	95812-08016	9 - 16						
92012-05010	24 - 18	94700-00895	1 - 16	95812-08045	8 - 7						
92012-05016	24 - 17	95022-06010	1 - 4	95822-06016	6 - 15						
93102-15801	11 - 13		10 - 8	95822-06020	10 - 24						
93102-17803	12 - 6		19 - 5		20 - 20						
93102-19814	9 - 24		20 - 14	95822-06090	10 - 23						
93102-19817	9 - 24		36 - 13	97602-05208	35 - 7						
93102-25816	9 - 31	95022-06012	35 - 10	97602-05216	34 - 3						
93102-25819	9 - 31	95022-06014	24 - 23	97602-06220	6 - 11						
93102-26809	13 - 7	95022-06016	9 - 29	97702-30012	31 - 7						
93102-26811	13 - 7	95022-06020	4 - 13	97702-60530	6 - 12						
93106-20808	21 - 3		36 - 5	97707-50012	16 - 25						
93210-07802	23 - 6	95022-06025	9 - 34		16 - 28						
93210-148H8	9 - 19	95022-06035	9 - 35		20 - 9						
93210-16805	12 - 28		9 - 39		32 - 9						
93210-258G2	12 - 34		10 - 13	97707-50016	16 - 4						
93210-29800	5 - 7	95022-06040	24 - 22		16 - 7						
93210-29803	29 - 11	95022-06045	10 - 14		16 - 11						
93210-30611	7 - 4	95022-06060	9 - 11		16 - 15						
93210-94800	6 - 14	95022-06070	9 - 12		16 - 21						
93211-07800	9 - 25		9 - 28		24 - 7						
93211-37803	9 - 32	95022-06080	10 - 15		24 - 10						
93306-002YS	4 - 2	95022-08012	9 - 2		27 - 2						
93306-002YW	4 - 2	95302-10600	17 - 3		27 - 8						
93306-006Y5	12 - 36	95602-06100	34 - 9		27 - 11						
93306-006Y7	12 - 36		34 - 15		27 - 13						
93306-054X9	13 - 6	95602-08200	14 - 10		27 - 17						
93306-253Y3	13 - 9		26 - 15		31 - 8						